



# Quartz-Twilight uniformity Run17

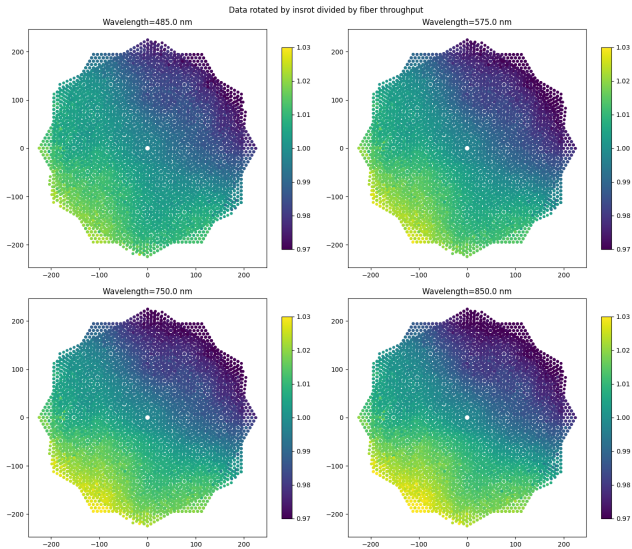
Arnaud Le Fur

v2  
2024-06-20

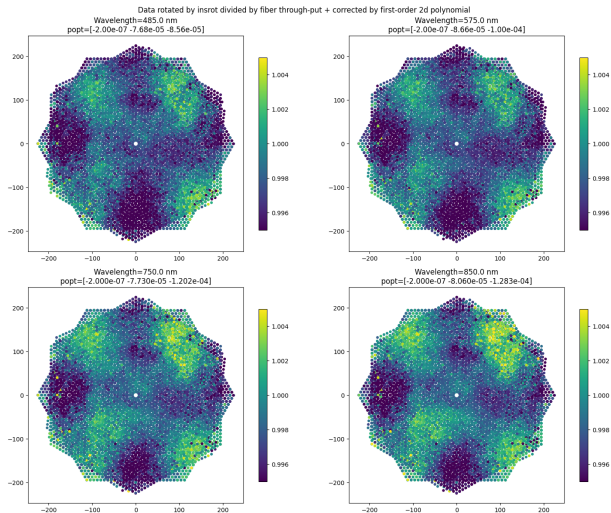
# Table of Contents

1. Data rotated by insrot divided by estimated fiber throughput
2. Data rotated by insrot divided by estimated fiber throughput + corrected
3. Fitted screen parameters wrt to wavelength
4. Twilight INSROT 0 normalized by corrected quartz
5. Twilight INSROT 0 normalized by corrected quartz - spectrograph corrected
6. Twilight INSROT -90 normalized by corrected quartz
7. Twilight INSROT -90 normalized by corrected quartz - spectrograph corrected
8. Per spectrograph wavelength correction
9. Per spectrograph median spectra

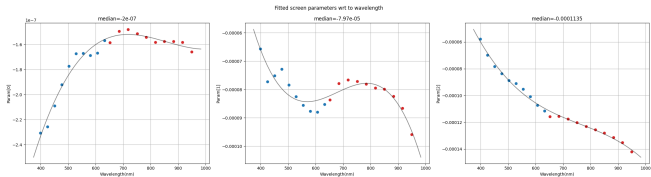
# Data rotated by insrot divided by estimated fiber throughput



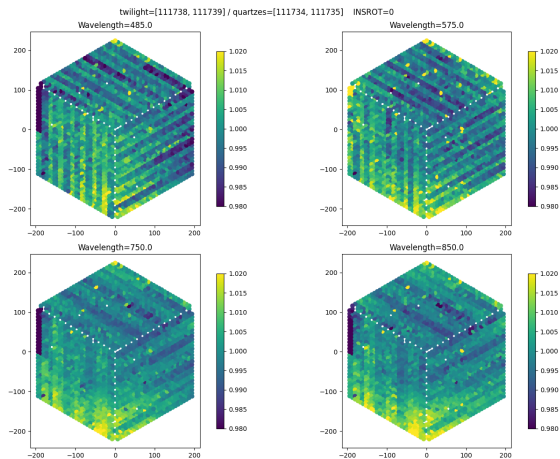
# Data rotated by insrot divided by estimated fiber throughput + corrected



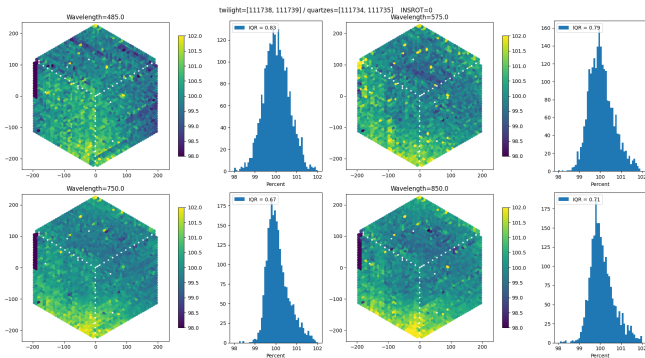
# Fitted screen parameters wrt to wavelength



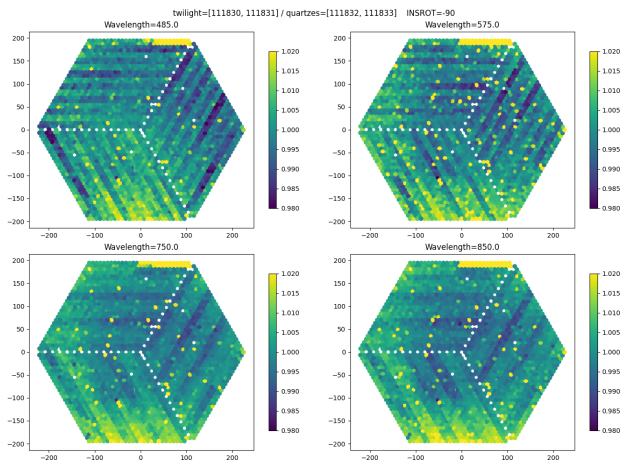
# Twilight INSROT 0 normalized by corrected quartz



# Twilight INSROT 0 normalized by corrected quartz - spectrograph corrected

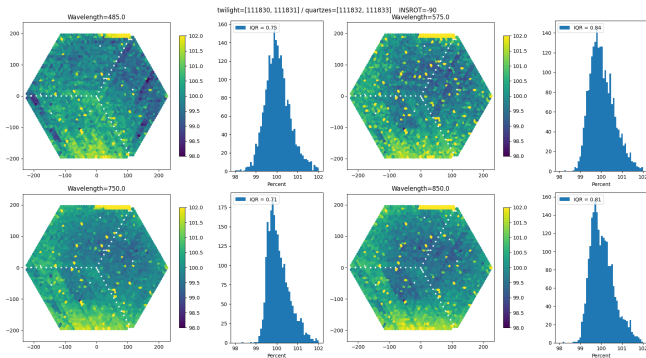


# Twilight INSROT -90 normalized by corrected quartz

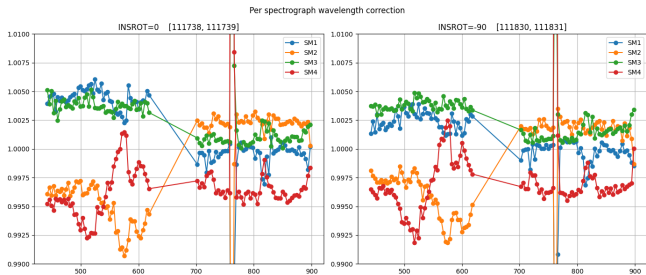




# Twilight INSROT -90 normalized by corrected quartz - spectrograph corrected



# Per spectrograph wavelength correction



# Per spectrograph median spectra

