



——Dot-roach analysis——

convergeId=v104317 dotRoachId0=v104318
darkRoachId0=v104343 mod4Id0=v104353

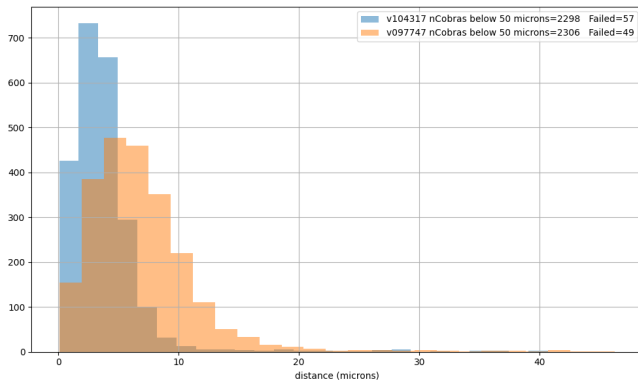
Arnaud Le Fur

auto
2024-02-15

Table of Contents

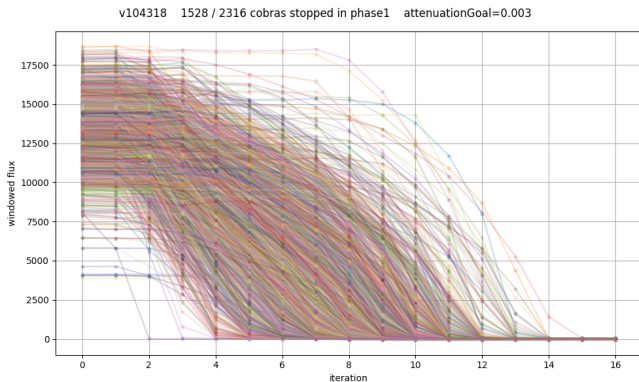
1. Near-dot convergence results
2. Cobras stopped in phase 1
3. Cobras going to phase 2
4. Cobras that did not behave as expected
5. How many iteration required to enter the dot
6. Cobras in phase 2
7. Flux in dark-roach vs distance in near-dot convergence
8. Final Attenuation for working cobras
9. Final flux for all cobras
10. DarkRoach PfsConfig fiberStatus wrt targetType
11. Mod4 PfsDesign
12. Mod4 PfsConfig fiberStatus wrt targetType
13. Conclusion
14. Cobrald 1797
15. Cobrald 1798
16. Cobrald 1824
17. Cobrald 2377
18. Cobrald 669
19. Cobrald 441
20. Cobrald 2036
21. Cobrald 2052

Near-dot convergence results



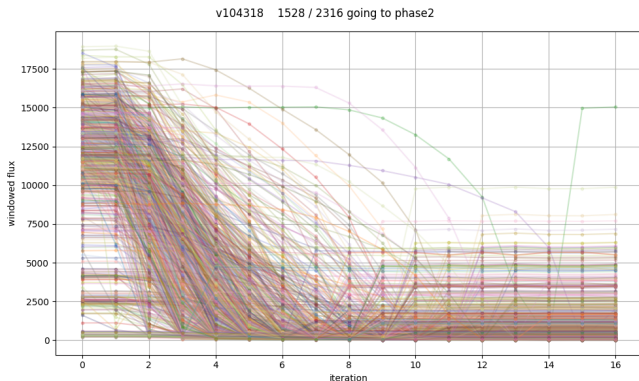
- ▶ There are more cobras below 10 microns
- ▶ There are more cobras with larger residuals

Cobras stopped in phase 1



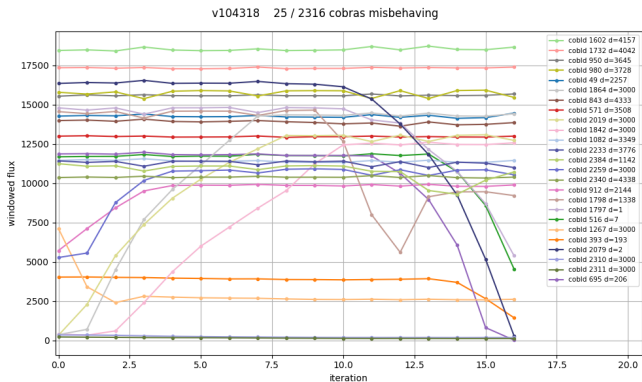
That's the cobras that reached a sufficient attenuation going through the dot moving phi in one direction.

Cobras going to phase 2



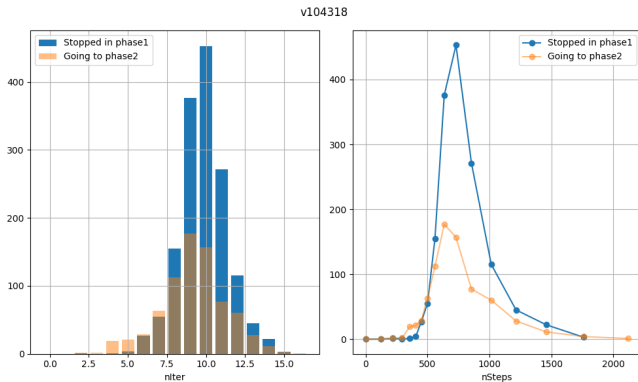
That's the cobras that have overshoot during phase 1, phi will go in the opposite direction in the next phase.

Cobras that did not behave as expected



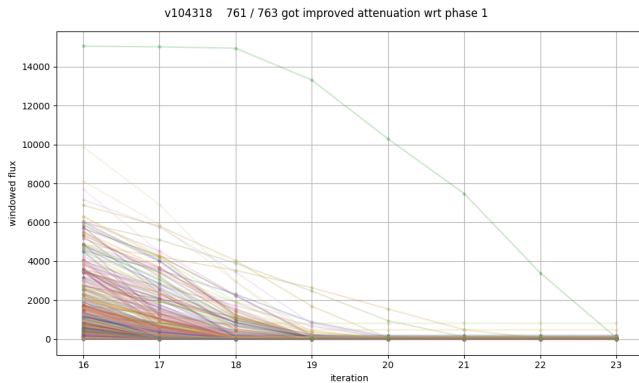
- ▶ 5 cobras started in the shadow of the dot.
- ▶ 10 Some cobras did not cross the dot.
- ▶ 6 cobras cross the dot partly.
- ▶ 4 cobras were going in but late.

How many iteration required to enter the dot

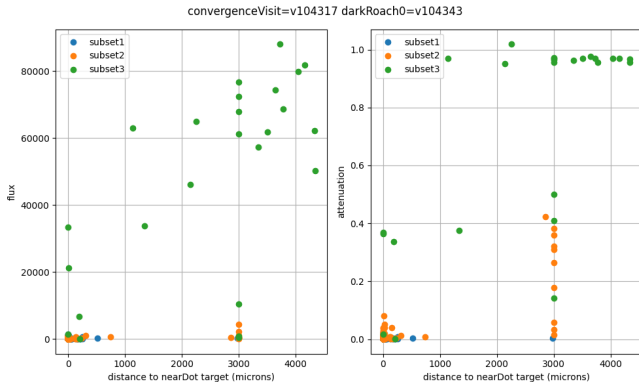


Right figure show you in terms of phi steps.

Cobras in phase 2

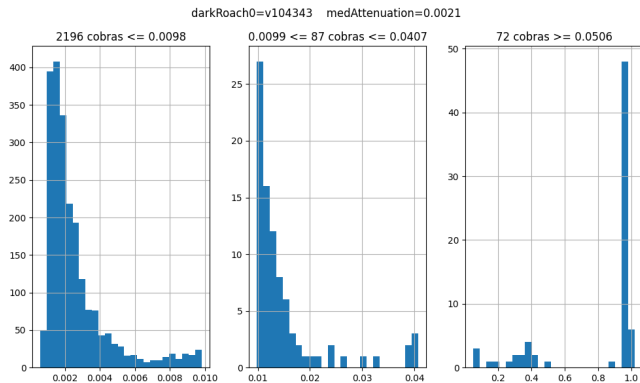


Flux in dark-roach vs distance in near-dot convergence



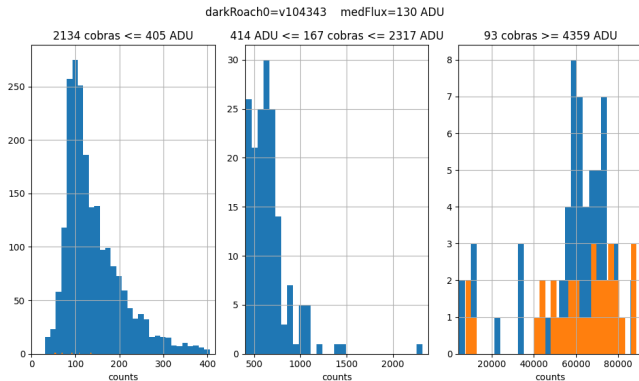
- ▶ We can observe that the tolerance to distance is quite high, problems start to appear when distance >0.7 mm.
- ▶ We can also see there are a few converged cobras that end up having a high flux.

Final Attenuation for working cobras



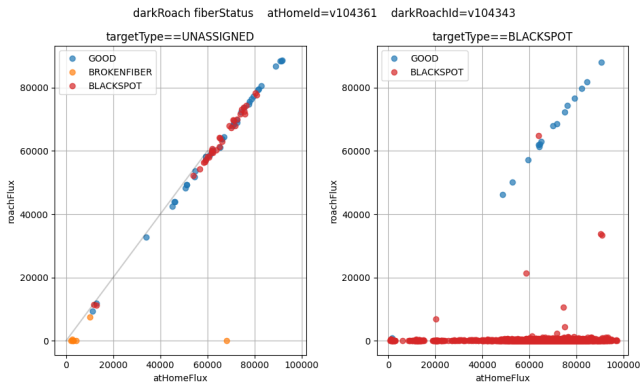
- ▶ Intrinsic problem due to the extraction (bright neighbours, scattered light) can bias the results.

Final flux for all cobras



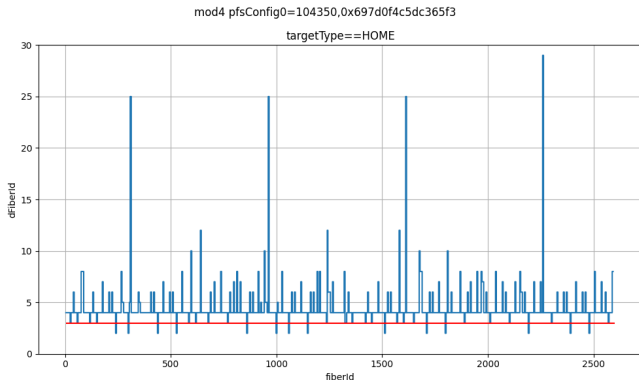
- ▶ Same conclusion as previous slide.
- ▶ intrinsic problem due to the extraction (bright neighbours, scattered light) can increase the apparent flux.

DarkRoach PfsConfig fiberStatus wrt targetType



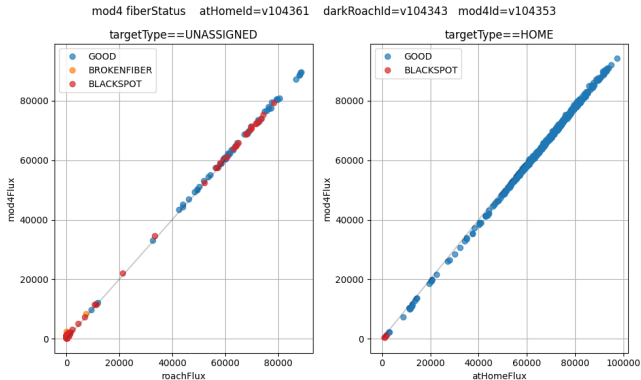
- ▶ TargetType is set correctly.
- ▶ FiberStatus looks very wrong, many fibers with high sps flux are labelled BLACKSPOT.

Mod4 PfsDesign



- ▶ This show you $dFiberId(fiberId[i+1] - fiberId[i])$ for the fibers that are revealed.
- ▶ In the context of MOD4, it should be at least 4.
- ▶ The PfsDesign is incorrect ! 35 do not respect that rule.

Mod4 PfsConfig fiberStatus wrt targetType

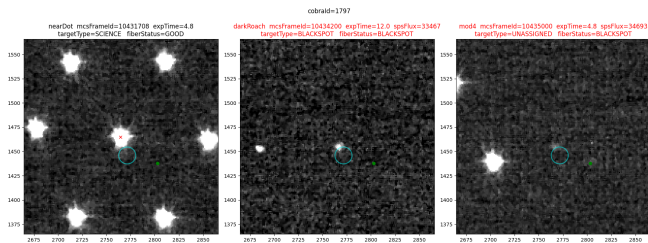


- ▶ TargetType is set correctly, 11 UNASSIGNED fibers was moved from dot.
- ▶ FiberStatus looks very wrong correct, many fibers with high sps flux are labelled BLACKSPOT.

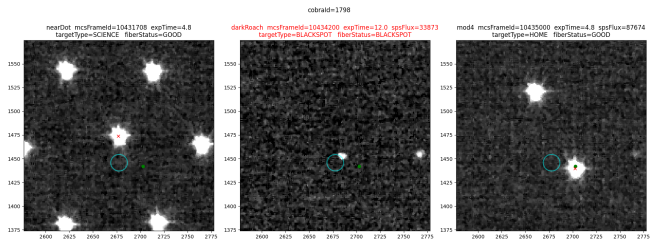
Conclusion

- ▶ In the context of dotRoach, convergence was worst than July.
- ▶ DotRoach worked OK
- ▶ DarkRoach pfsConfig.targetType is correct, BLACKSPOT cobras are driven behind BLACKSPOT.
- ▶ DarkRoach pfsConfig.fiberStatus is wrong, many cobras are not matched by mcs.
- ▶ Mod4 PfsDesign is wrong, misidentified cobras are driven back to HOME.
- ▶ Mod4 PfsConfig.targetType is correct, fps is driving only HOME cobras to HOME
- ▶ Mod4 PfsConfig.fiberStatus is wrong, many cobras are not matched by mcs.

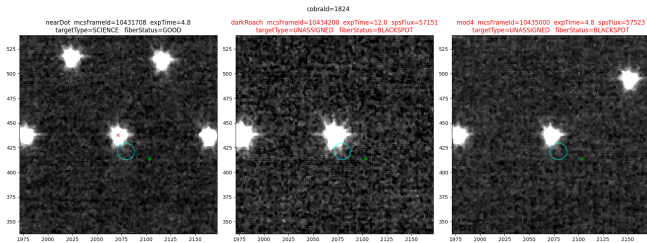
CobraId 1797



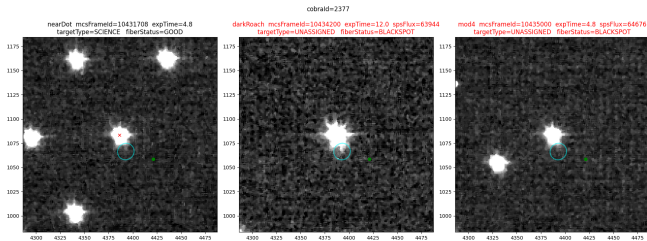
CobraId 1798



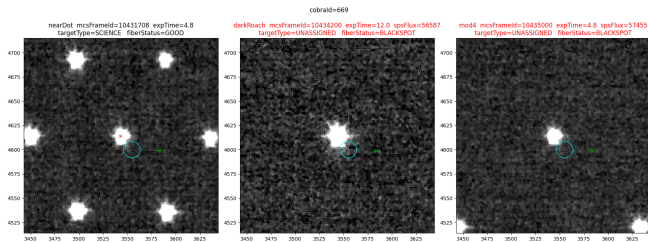
CobraId 1824



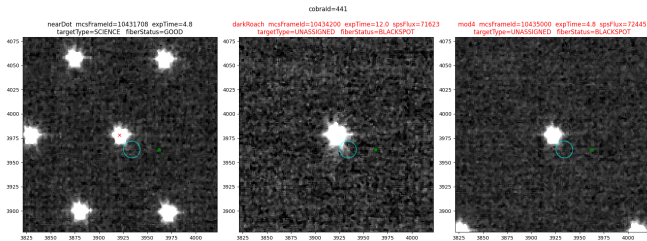
CobraId 2377



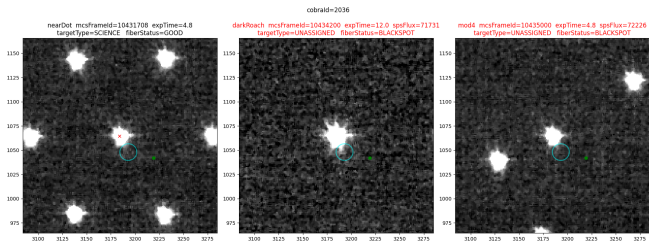
CobraId 669



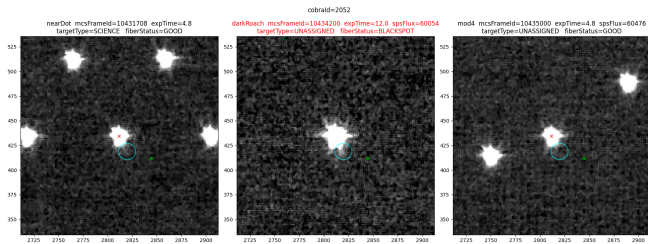
CobraId 441



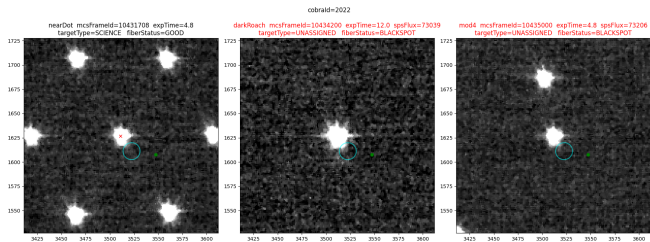
CobraId 2036



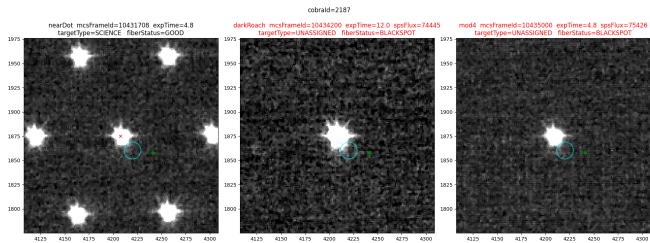
CobraId 2052



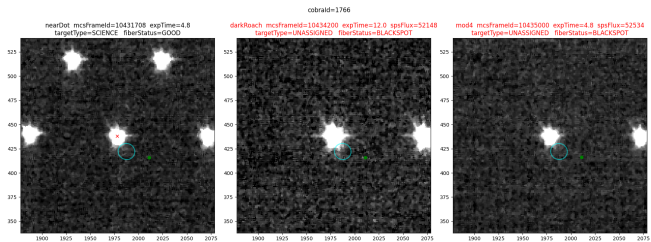
CobraId 2022



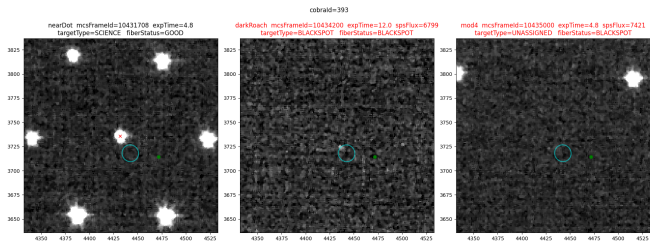
CobraId 2187



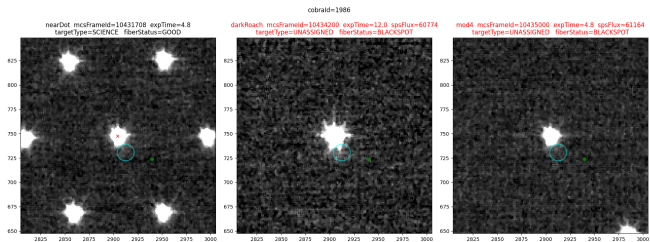
CobraId 1766



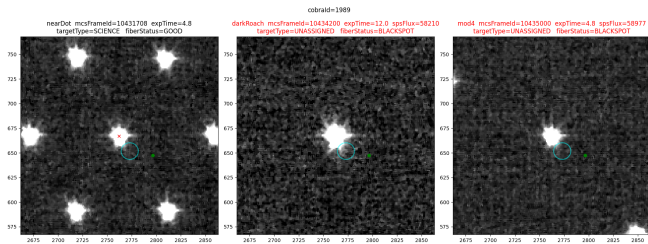
CobraId 393



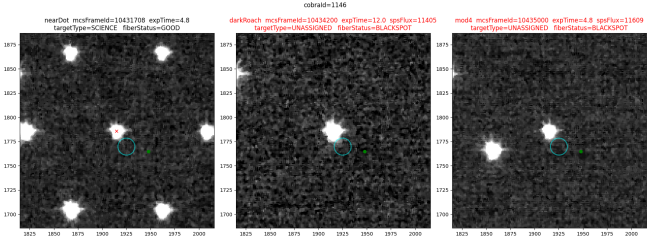
CobraId 1986



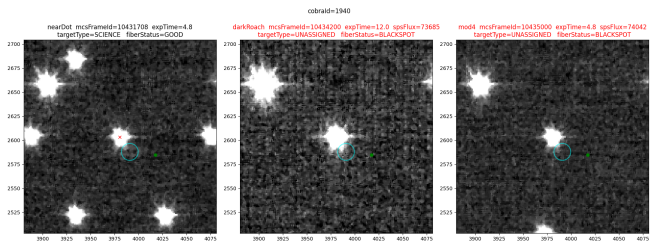
CobraId 1989



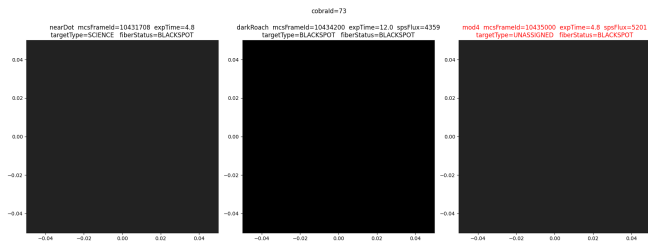
CobraId 1146



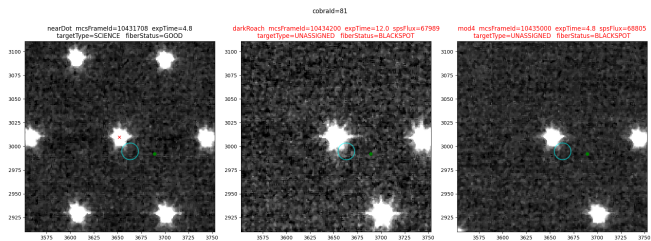
CobraId 1940



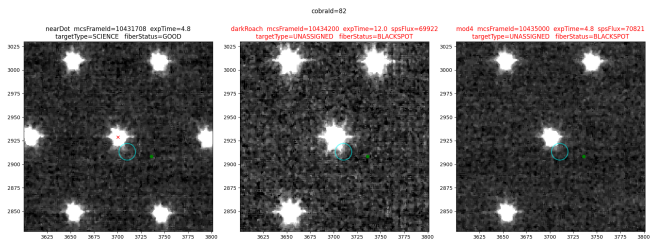
CobraId 73



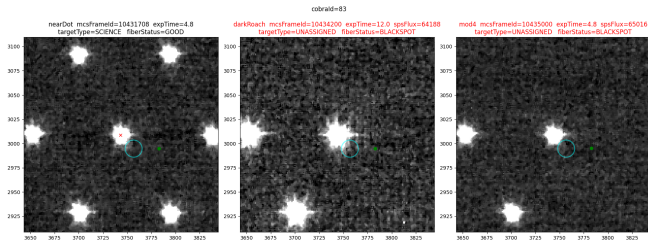
CobraId 81



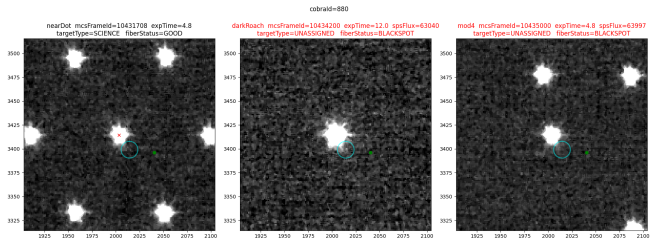
CobraId 82



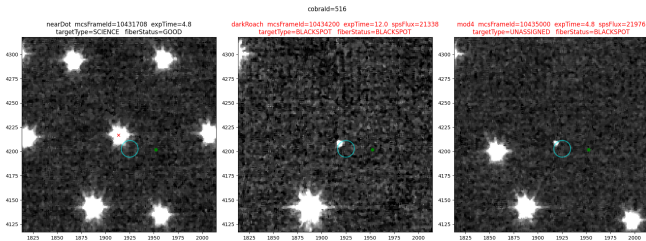
CobraId 83



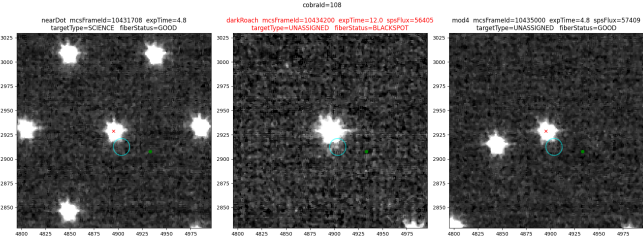
CobraId 880



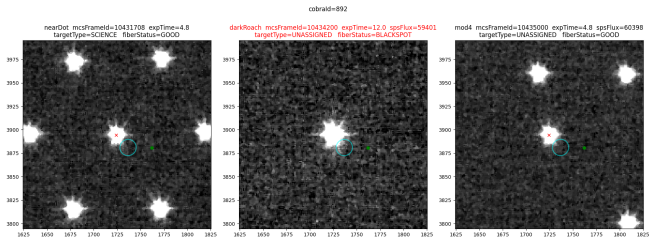
CobraId 516



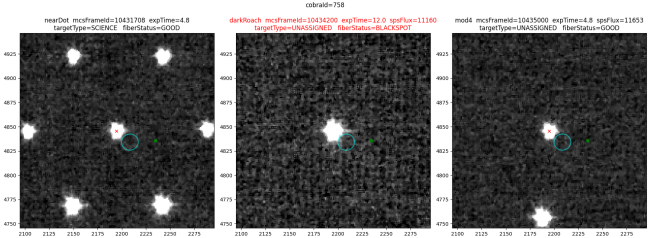
CobraId 108



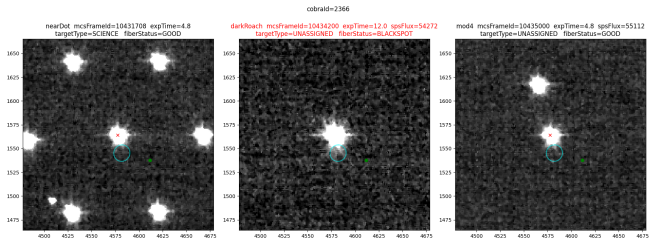
CobraId 892



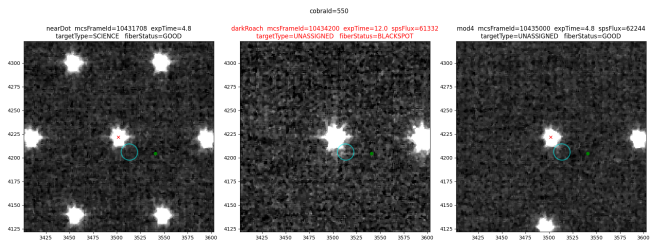
CobraId 758



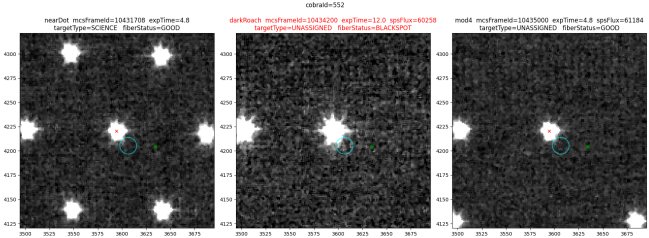
CobraId 2366



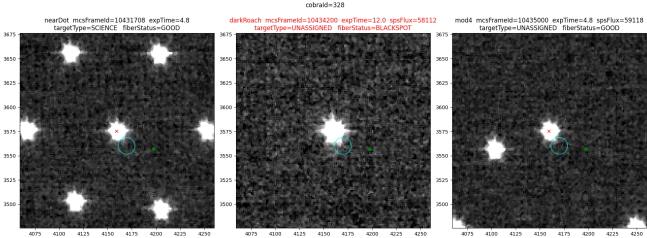
CobraId 550



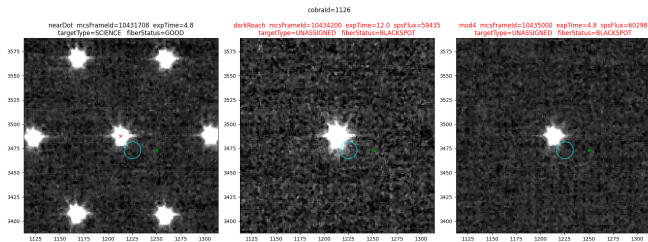
CobraId 552



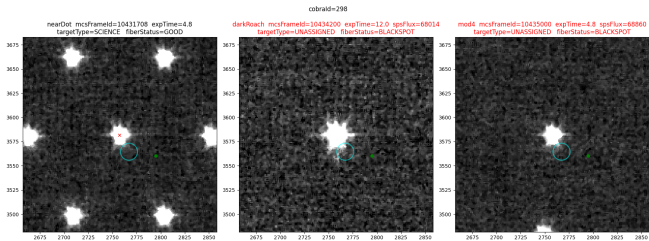
CobraId 328



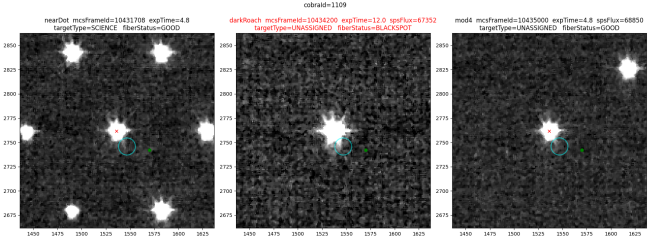
CobraId 1126



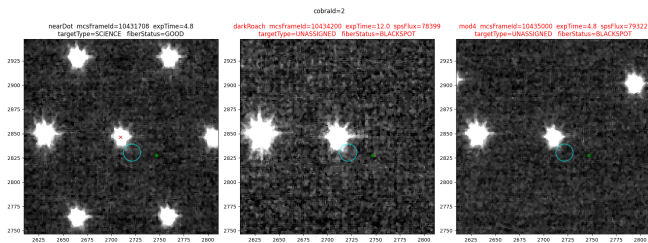
CobraId 298



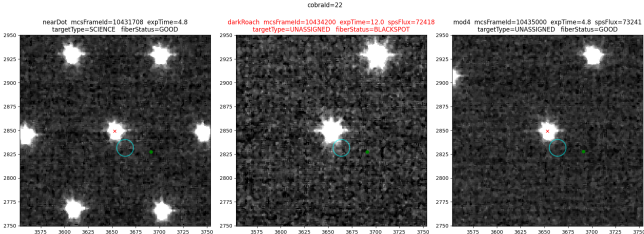
CobraId 1109



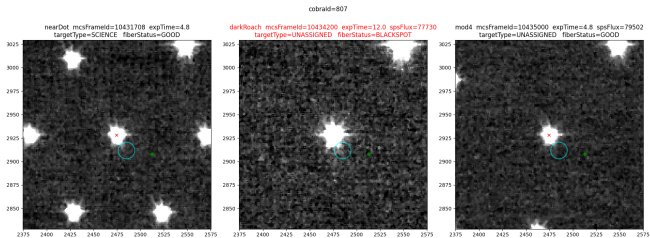
CobraId 2



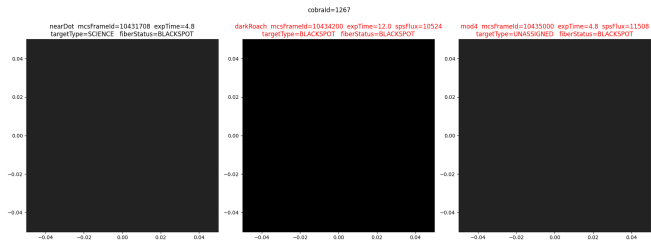
CobraId 22



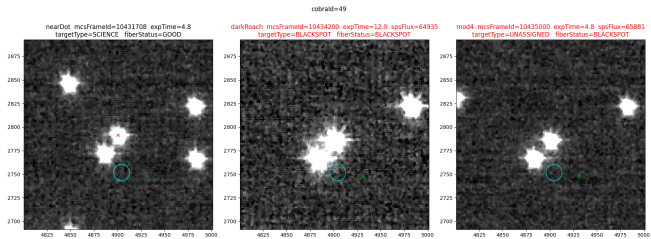
CobraId 807



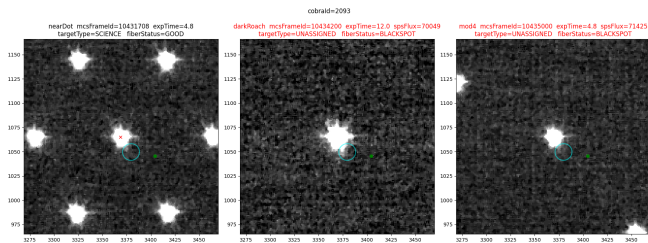
CobraId 1267



CobraId 49



CobraId 2093



CobraId 1846

