



——Dot-roach analysis——

convergeId=v103860 dotRoachId0=v103861
darkRoachId0=v103964 mod4Id0=v103974

Arnaud Le Fur

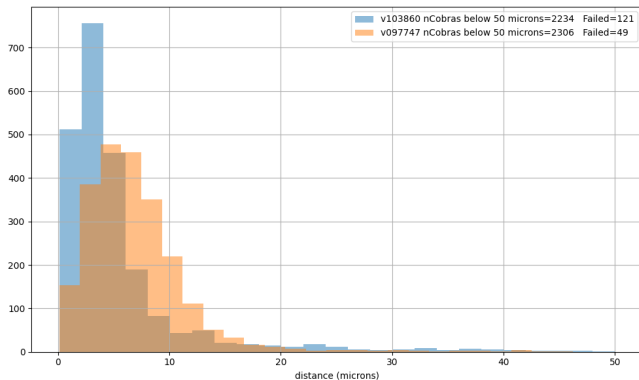
auto

2024-02-15

Table of Contents

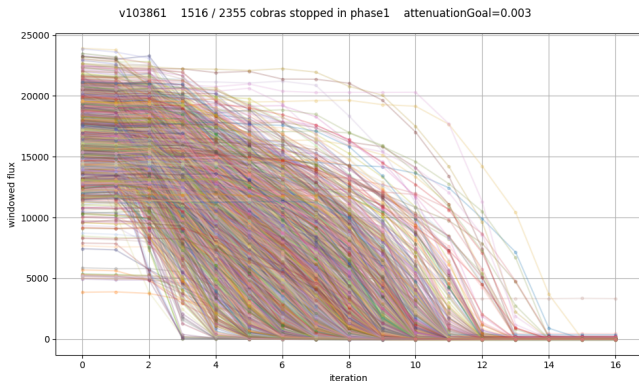
1. Near-dot convergence results
2. Cobras stopped in phase 1
3. Cobras going to phase 2
4. Cobras that did not behave as expected
5. How many iteration required to enter the dot
6. Cobras in phase 2
7. Flux in dark-roach vs distance in near-dot convergence
8. Final Attenuation for working cobras
9. Final flux for all cobras
10. DarkRoach PfsConfig fiberStatus wrt targetType
11. Mod4 PfsDesign
12. Mod4 PfsConfig fiberStatus wrt targetType
13. Conclusion
14. Cobrald 662
15. Cobrald 148
16. Cobrald 856
17. Cobrald 516
18. Cobrald 2366
19. Cobrald 2151

Near-dot convergence results



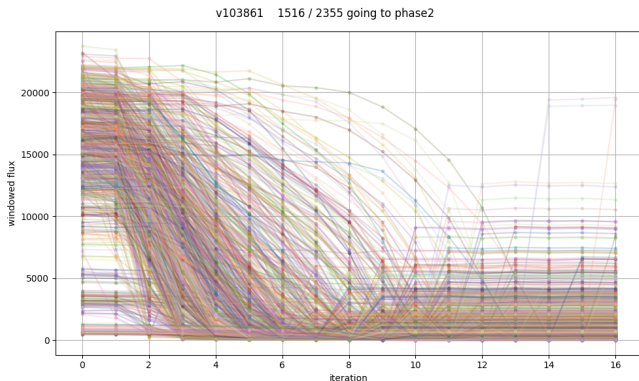
- ▶ There are more cobras below 10 microns
- ▶ There are more cobras with larger residuals

Cobras stopped in phase 1



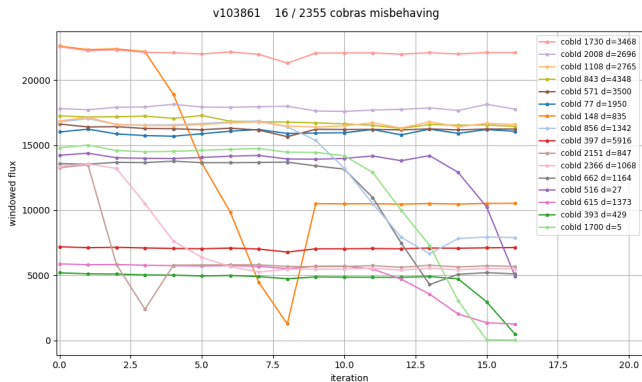
That's the cobras that reached a sufficient attenuation going through the dot moving phi in one direction.

Cobras going to phase 2



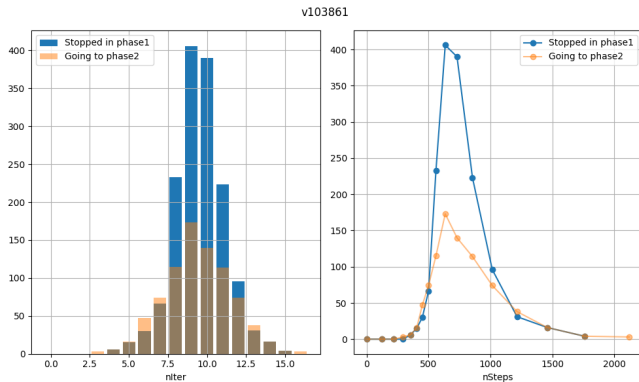
That's the cobras that have overshoot during phase 1, phi will go in the opposite direction in the next phase.

Cobras that did not behave as expected



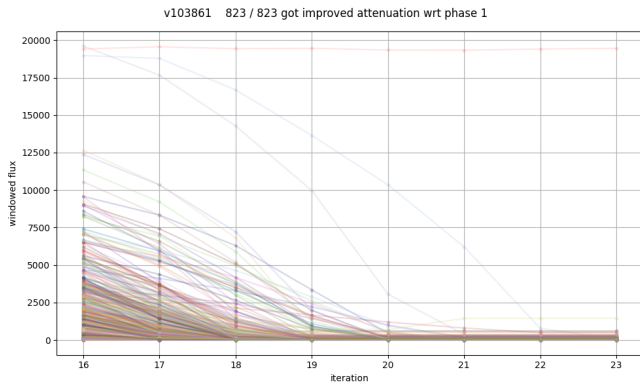
- ▶ 3 cobras started in the shadow of the dot.
- ▶ 7 Some cobras did not cross the dot.
- ▶ 0 cobras cross the dot partly.
- ▶ 6 cobras were going in but late.

How many iteration required to enter the dot

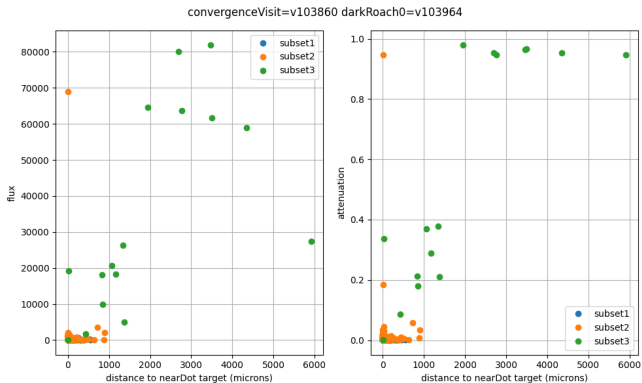


Right figure show you in terms of phi steps.

Cobras in phase 2

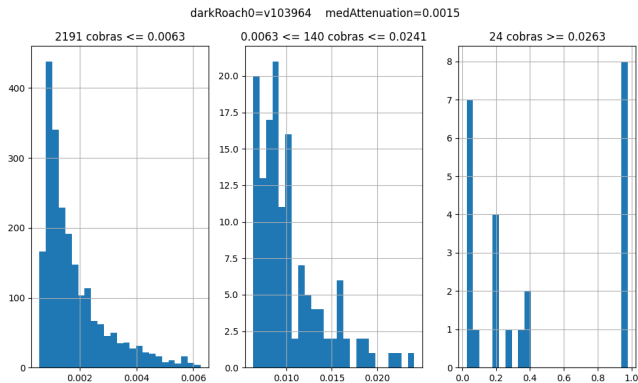


Flux in dark-roach vs distance in near-dot convergence



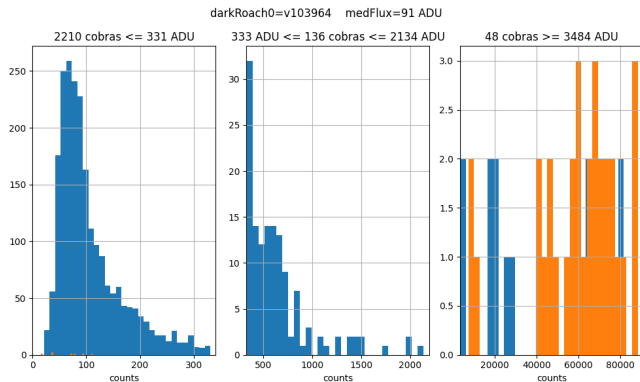
- ▶ We can observe that the tolerance to distance is quite high, problems start to appear when distance >0.7 mm.
- ▶ We can also see there are a few converged cobras that end up having a high flux.

Final Attenuation for working cobras



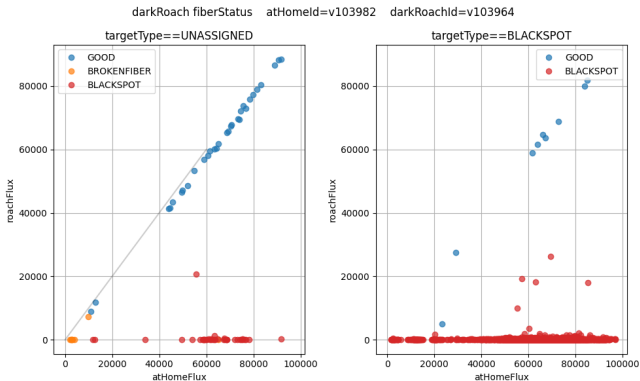
- ▶ Intrinsic problem due to the extraction (bright neighbours, scattered light) can bias the results.

Final flux for all cobras



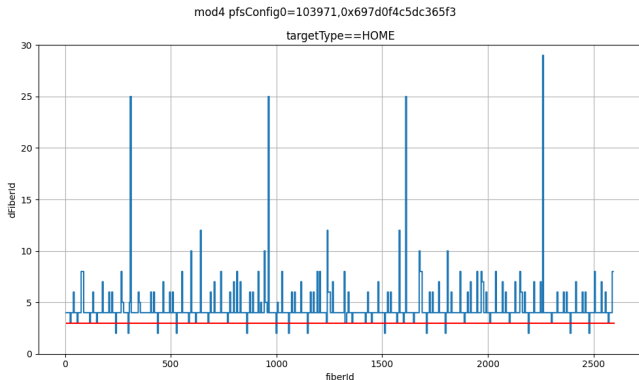
- ▶ Same conclusion as previous slide.
- ▶ intrinsic problem due to the extraction (bright neighbours, scattered light) can increase the apparent flux.

DarkRoach PfsConfig fiberStatus wrt targetType



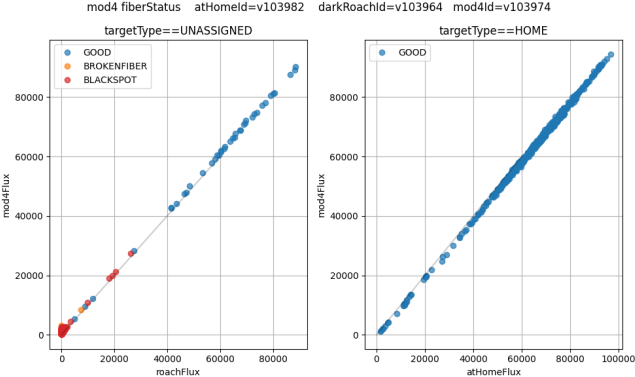
- ▶ Only one spectrograph targetType is set correctly, dotRoach was done SM by SM.
- ▶ FiberStatus looks mostly correct, 6 fibers with high sps flux is labelled BLACKSPOT.

Mod4 PfsDesign



- ▶ This show you $dFiberId(fiberId[i+1] - fiberId[i])$ for the fibers that are revealed.
- ▶ In the context of MOD4, it should be at least 4.
- ▶ The PfsDesign is incorrect ! 35 do not respect that rule.

Mod4 PfsConfig fiberStatus wrt targetType

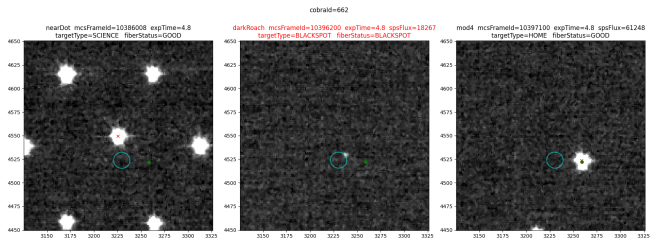


- ▶ TargetType is correct, 0 UNASSIGNED fibers was moved from dot.
- ▶ FiberStatus looks mostly correct, 5 fibers with high sps flux is labelled BLACKSPOT.

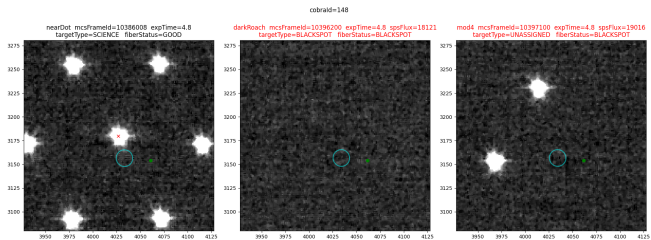
Conclusion

- ▶ In the context of dotRoach, convergence was worst than July.
- ▶ DotRoach worked OK
- ▶ DarkRoach pfsConfig.targetType is wrong, UNASSIGNED cobras are driven behind BLACKSPOT.
- ▶ DarkRoach pfsConfig.fiberStatus is correct, mcs is matching cobras correctly.
- ▶ Mod4 PfsDesign is wrong, misidentified cobras are driven back to HOME.
- ▶ Mod4 PfsConfig.targetType is correct, fps is driving only HOME cobras to HOME
- ▶ Mod4 PfsConfig.fiberStatus is correct, mcs is matching cobras correctly.

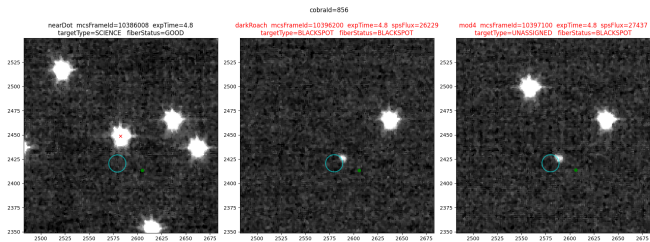
CobraId 662



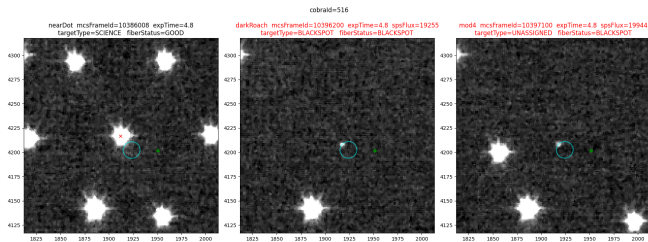
CobraId 148



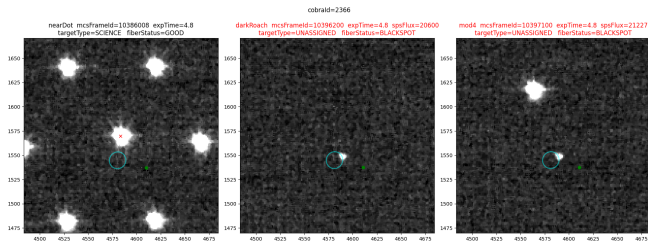
CobraId 856



CobraId 516



CobraId 2366



CobraId 2151

