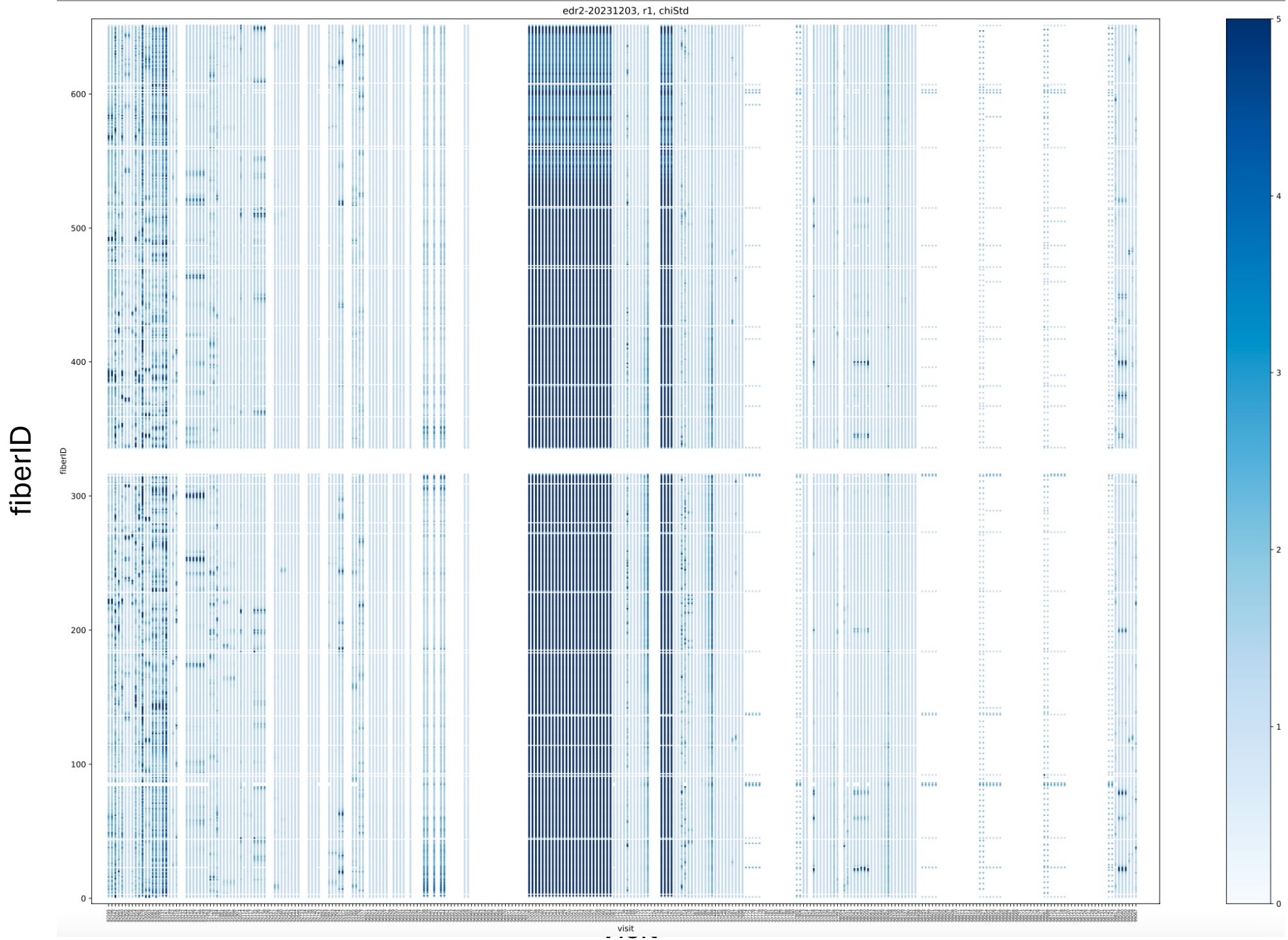


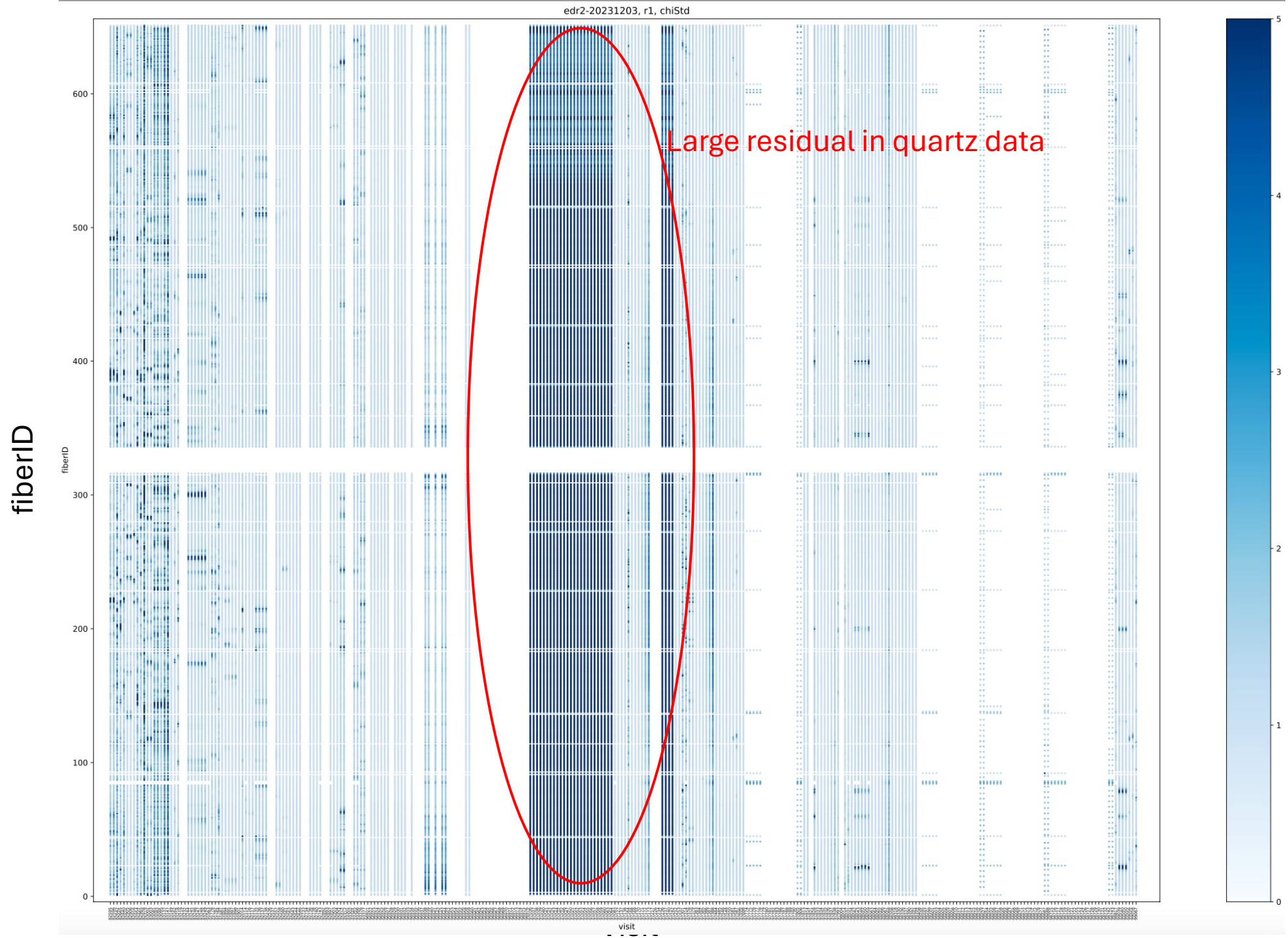
extractionQA for edr2-20231203 (r arm)

Satoshi Hamano (NAOJ)

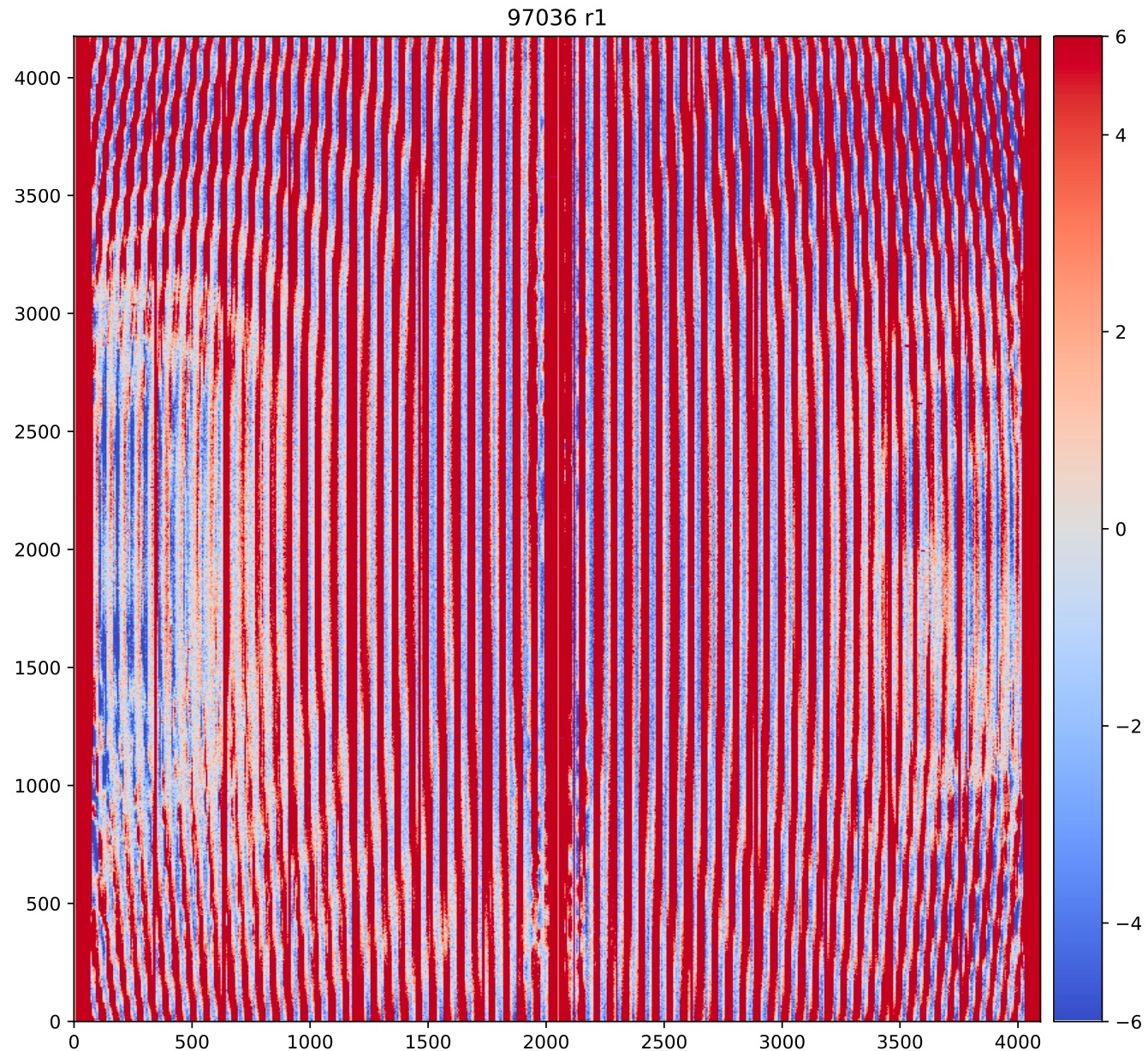
r1
chi's rms
for each
fiber



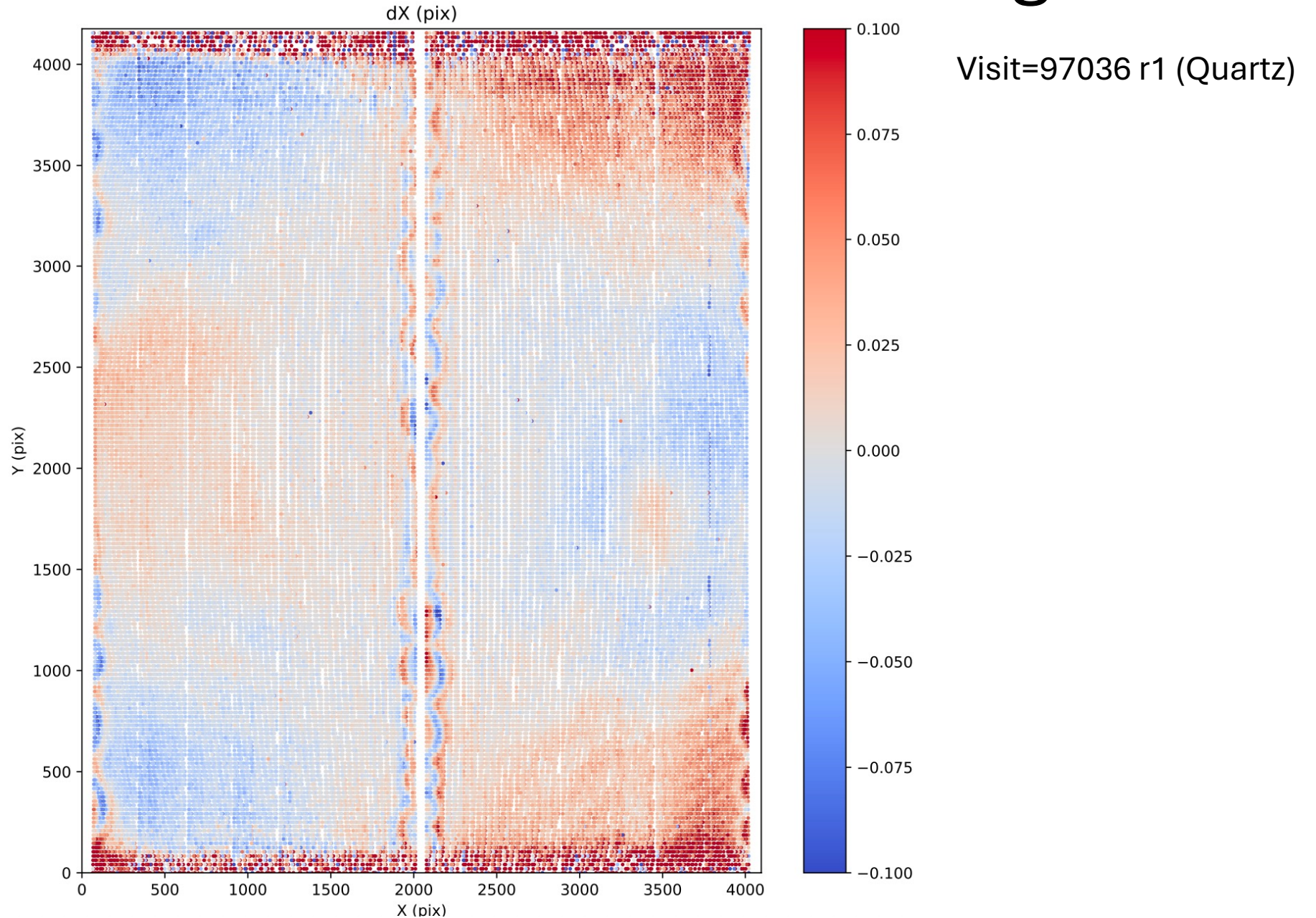
r1
chi's rms
for each
fiber



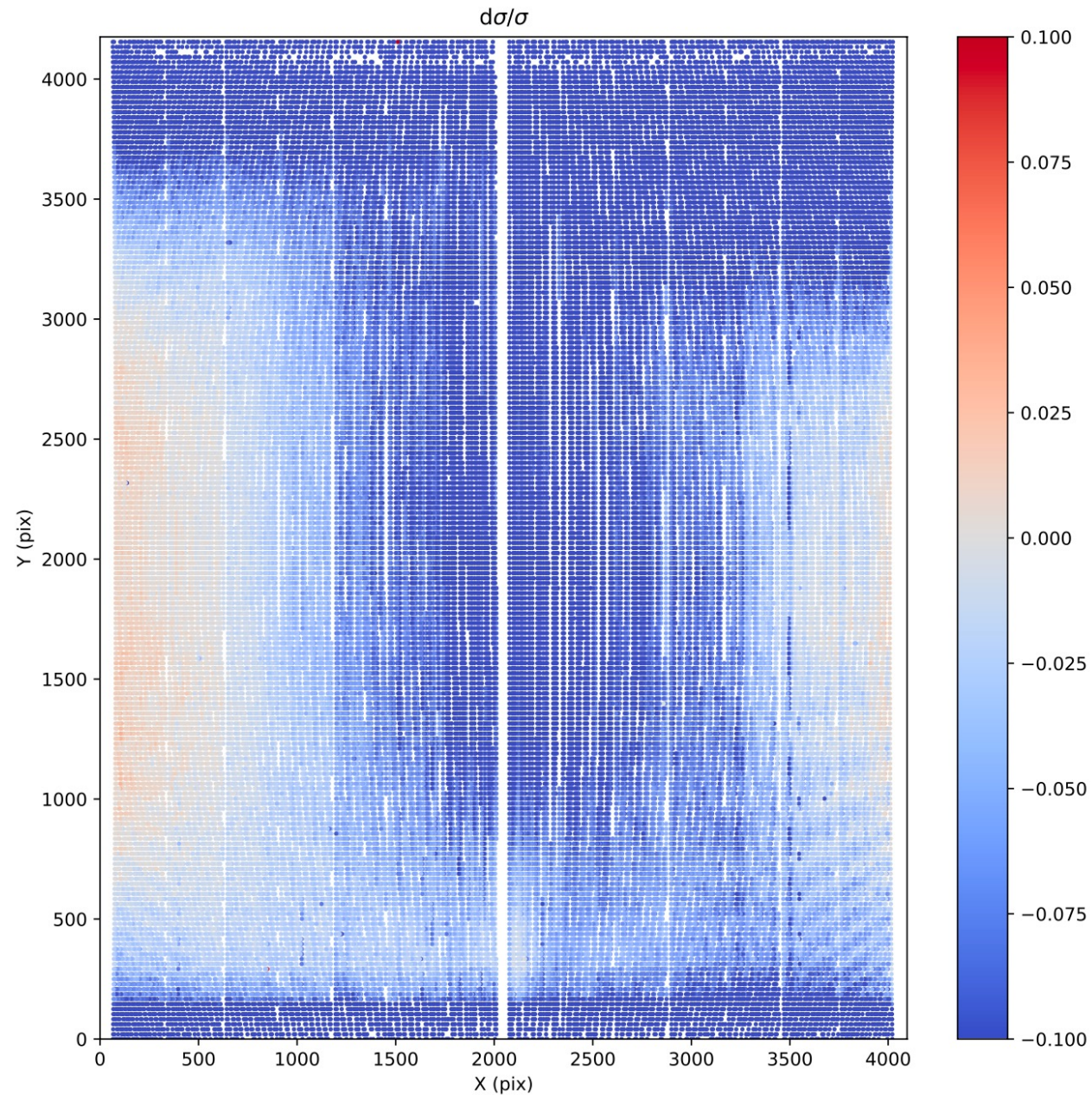
Chi map for Visit=97036 (Quartz)



Offset between model and calExp images



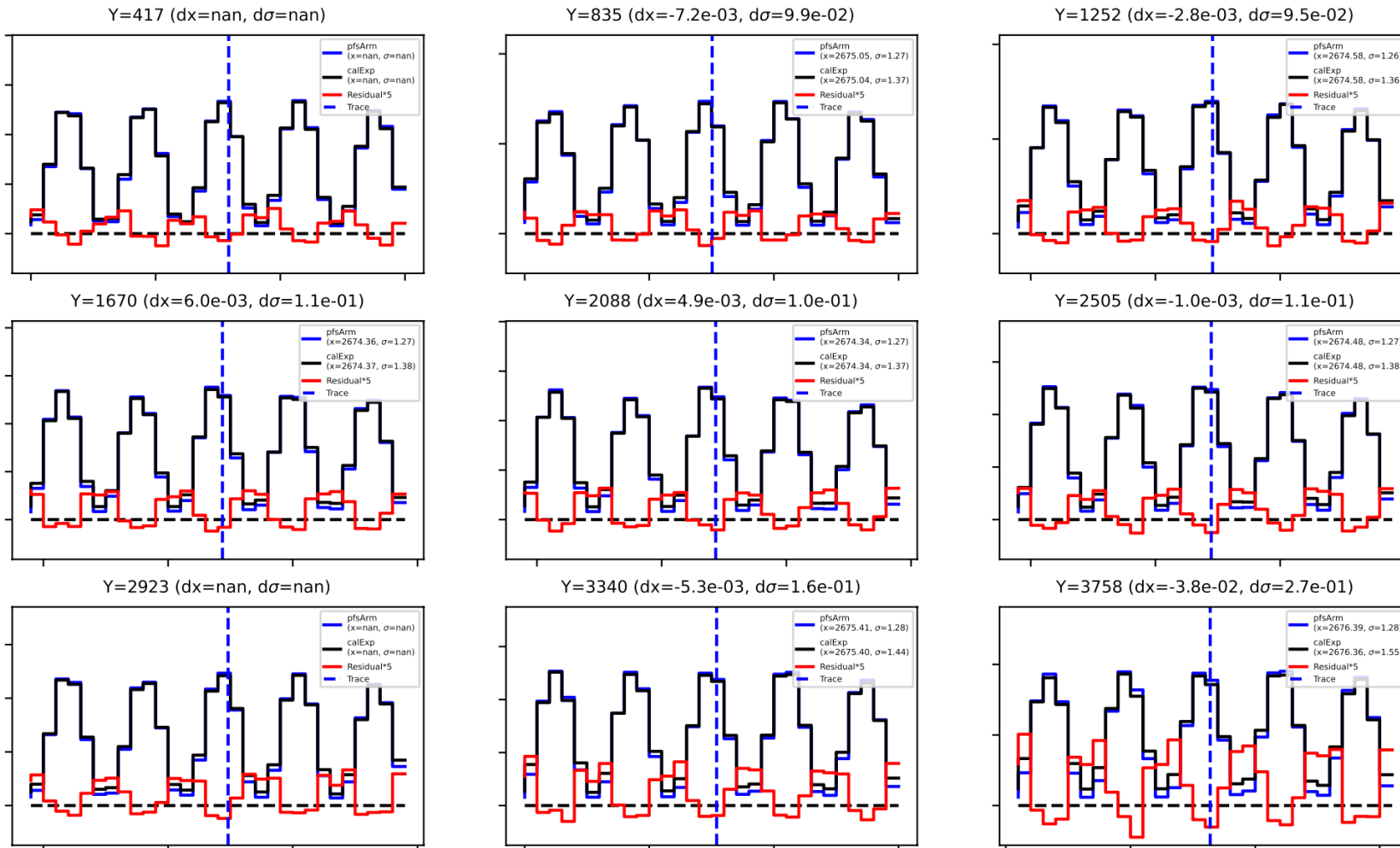
Width difference between model and calExp images



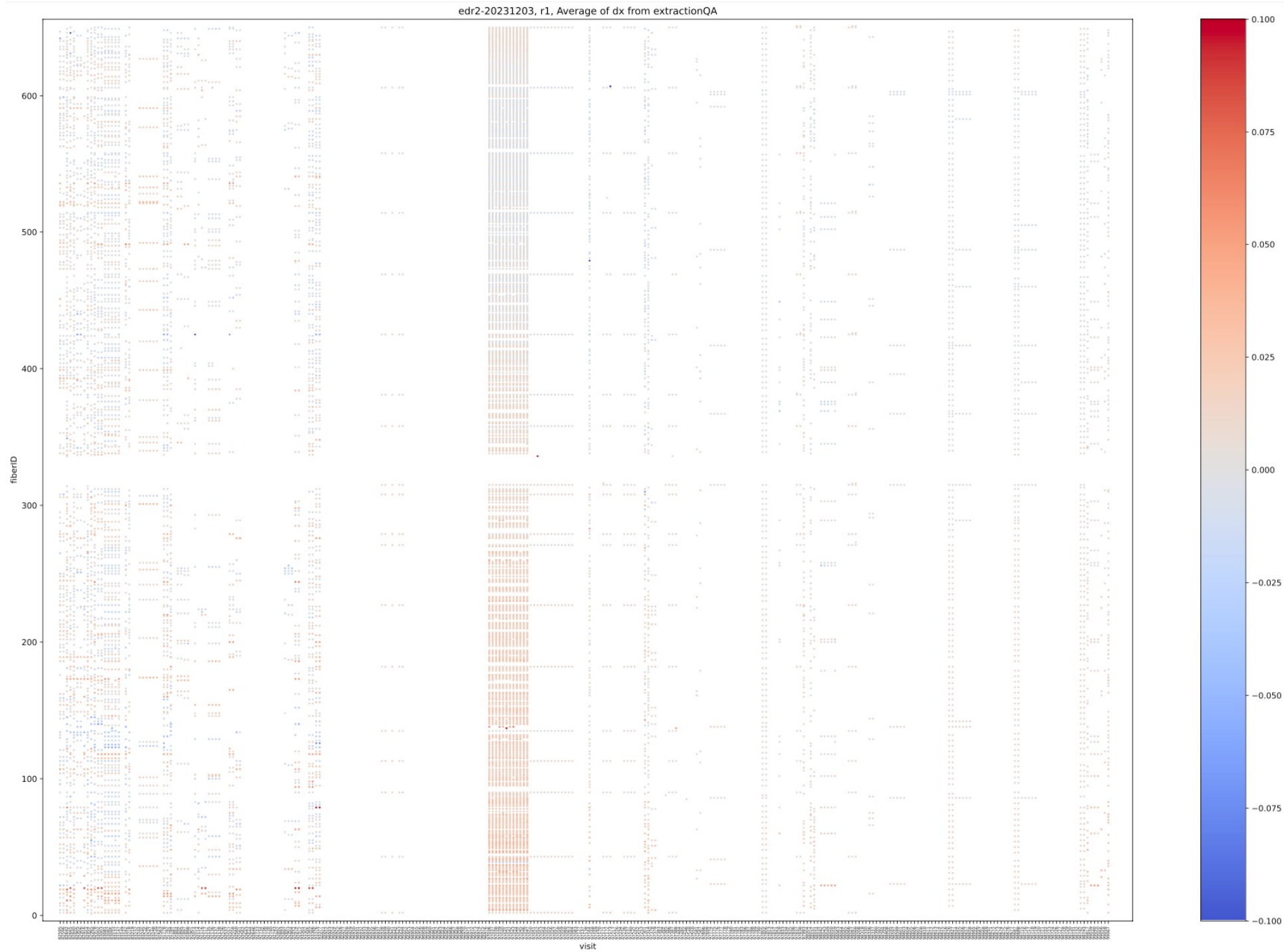
Visit=97036 r1 (Quartz)

Cross-cut profiles and residuals

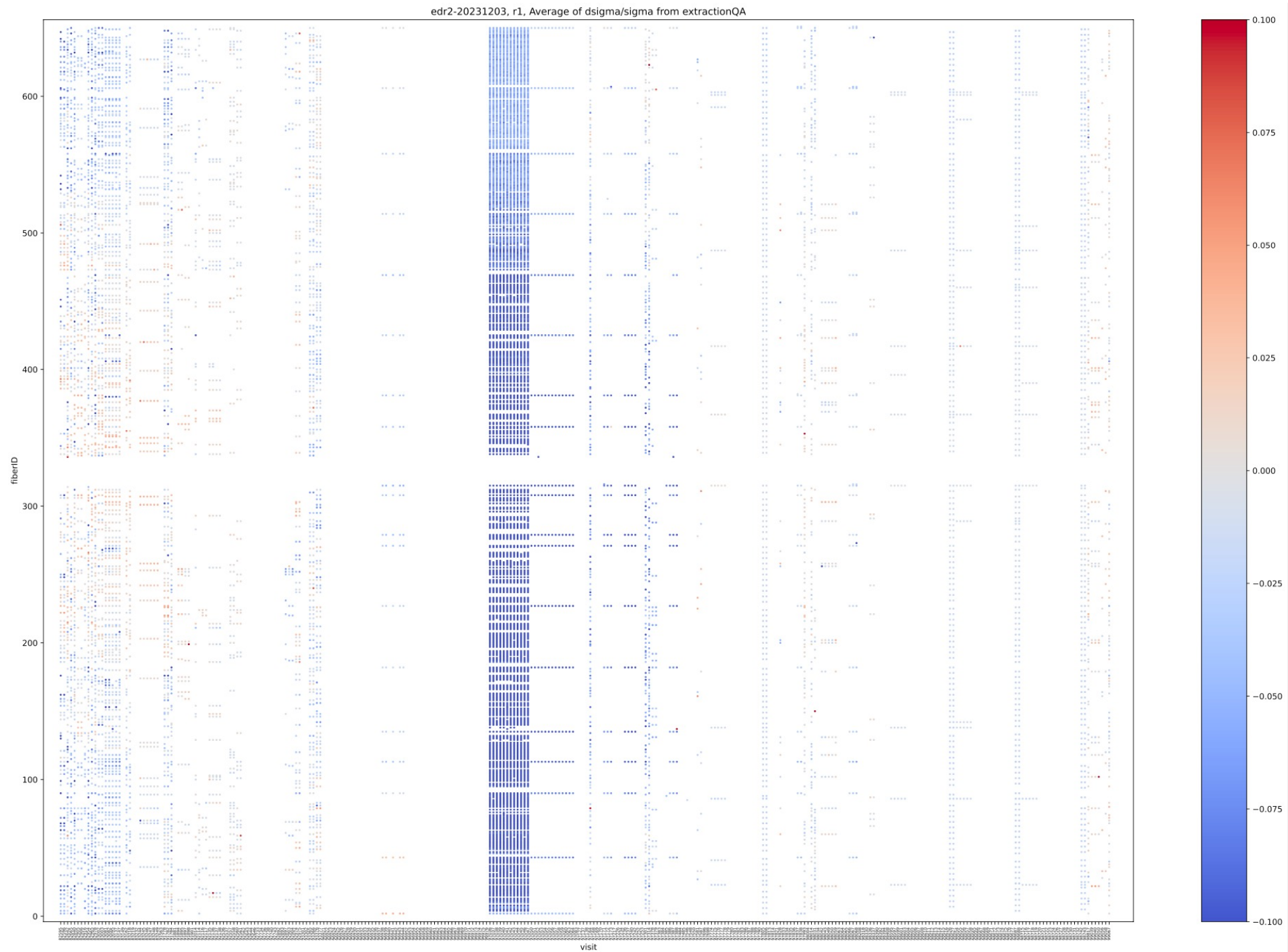
visit=97036 arm=r spectrograph=1
f=218, X=2675.3



dX map (r1)



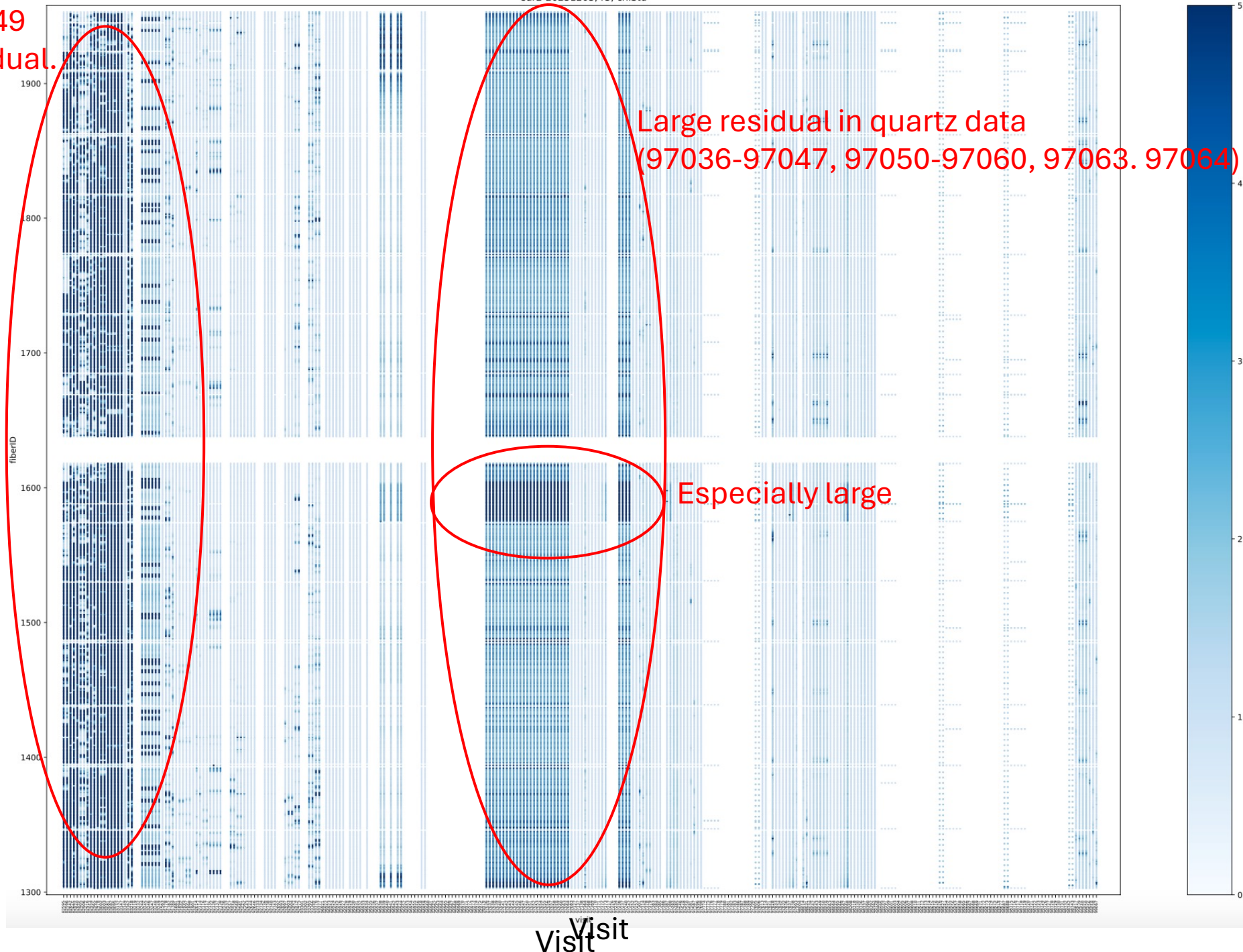
$d\sigma/\sigma$ map (r1)



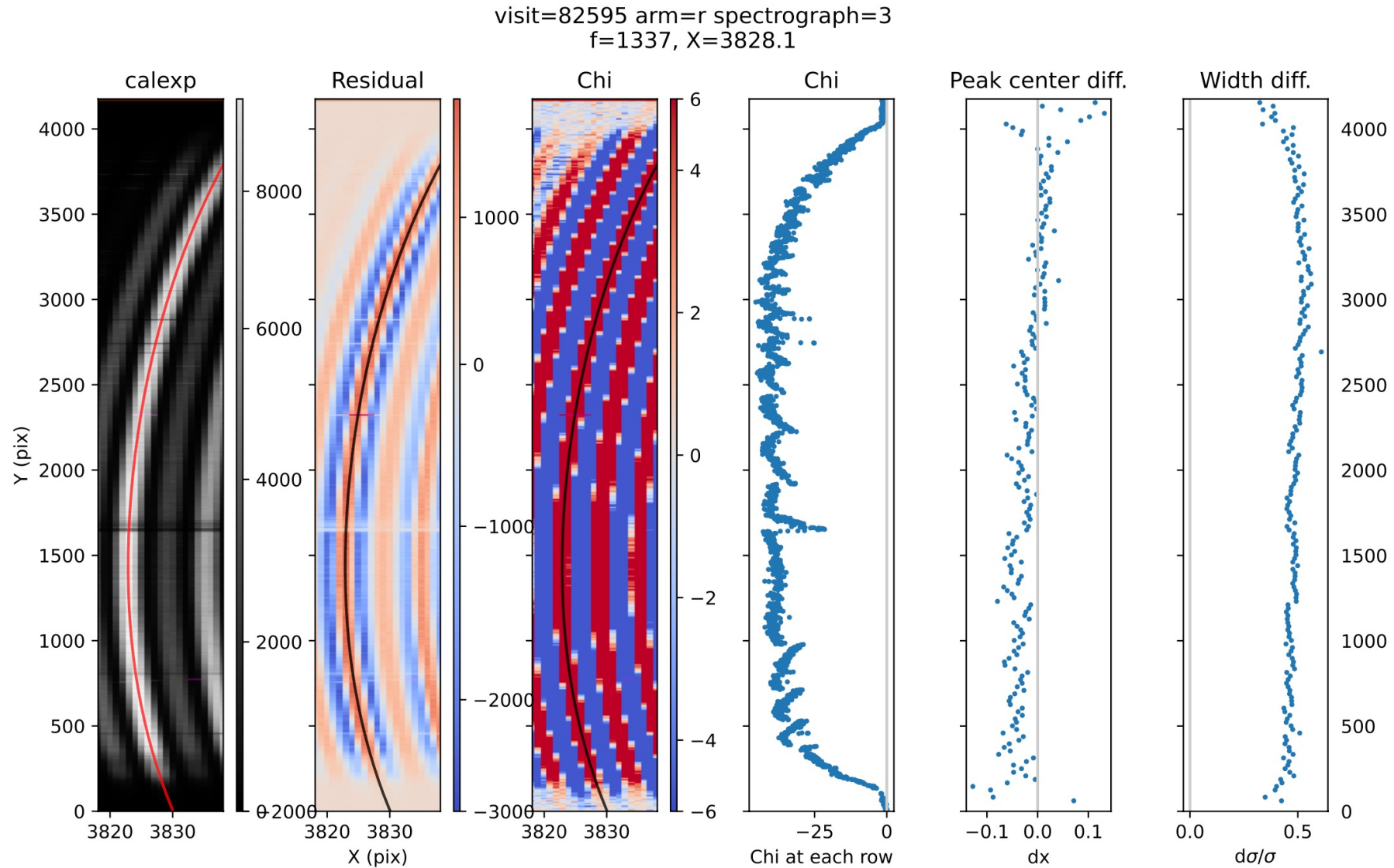
r3 chi's rms for each fiber

The r3 data of 82595-83249
visits have very large residual.

fiberID

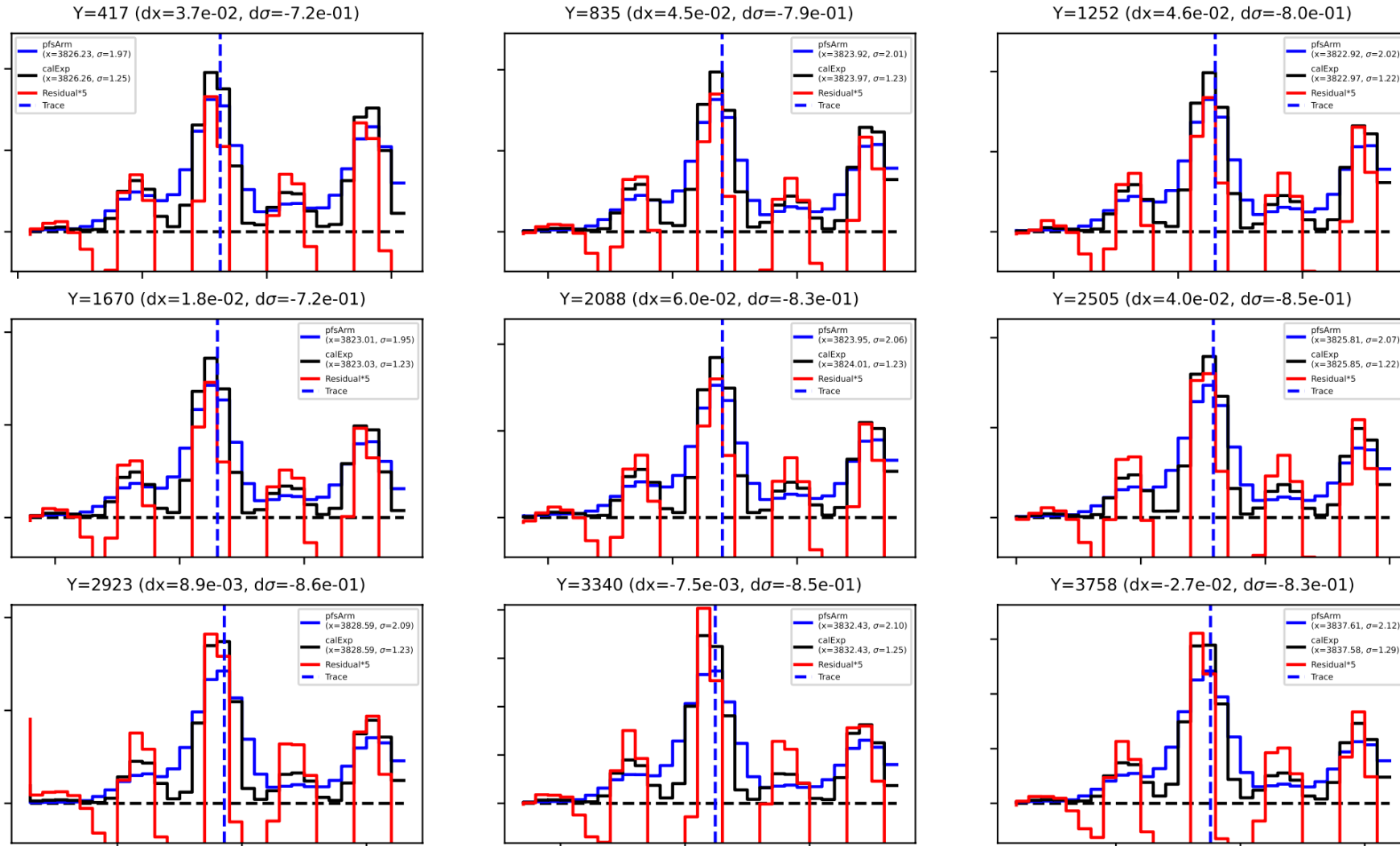


An example fiber with large residual (visit=82595)

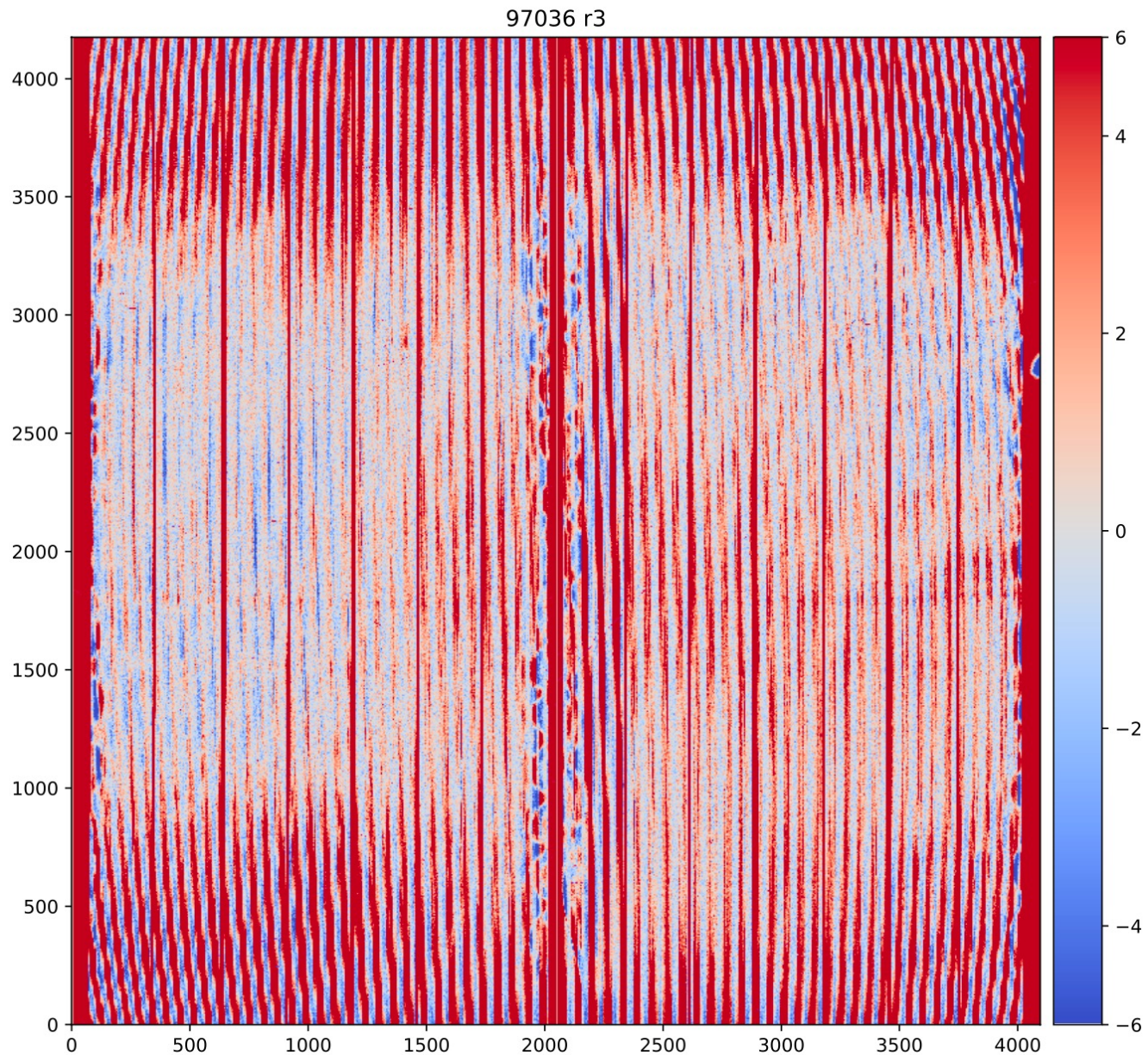


Cross-cut profiles and residuals (visit=82595)

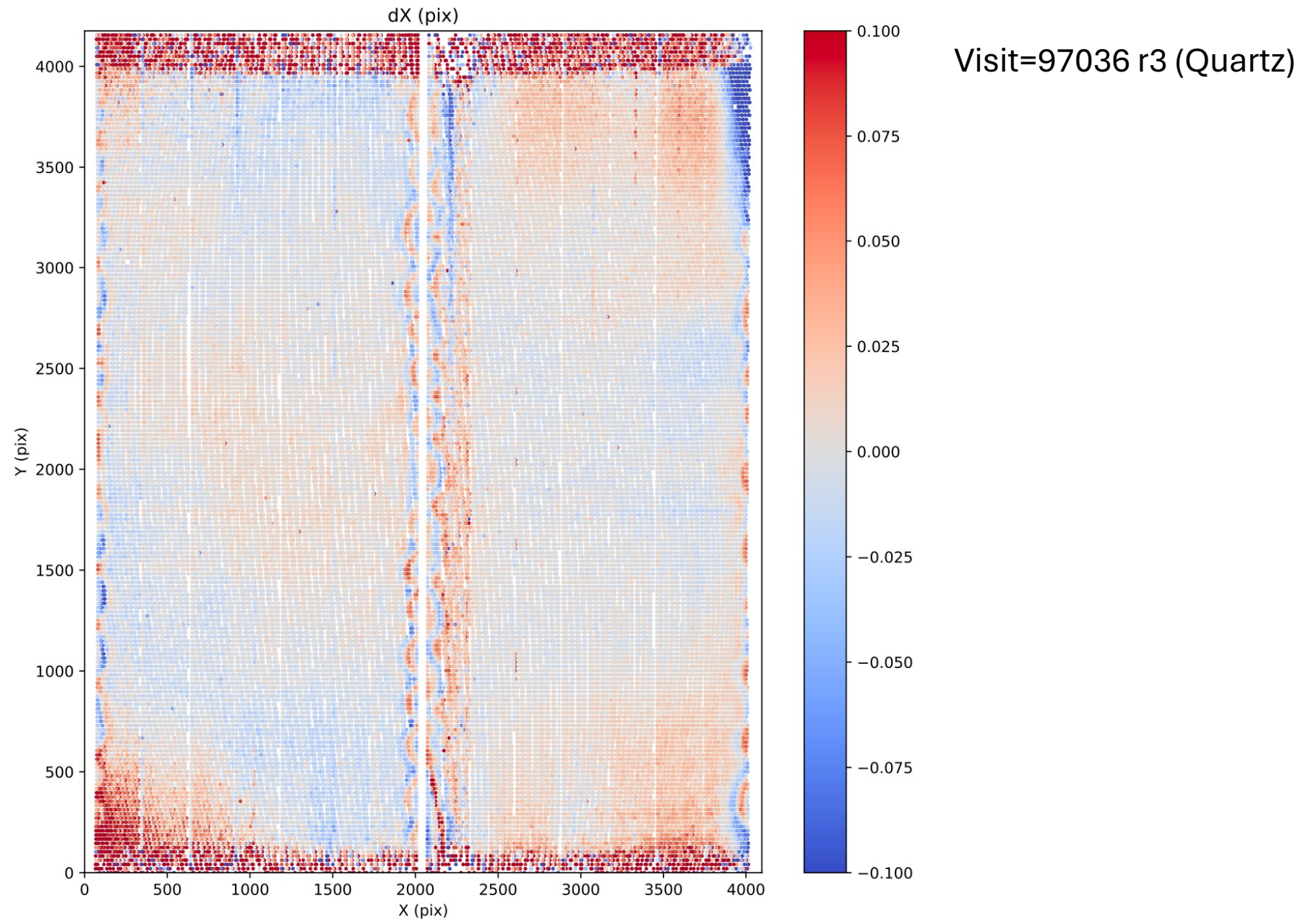
visit=82595 arm=r spectrograph=3
f=1337, X=3828.1



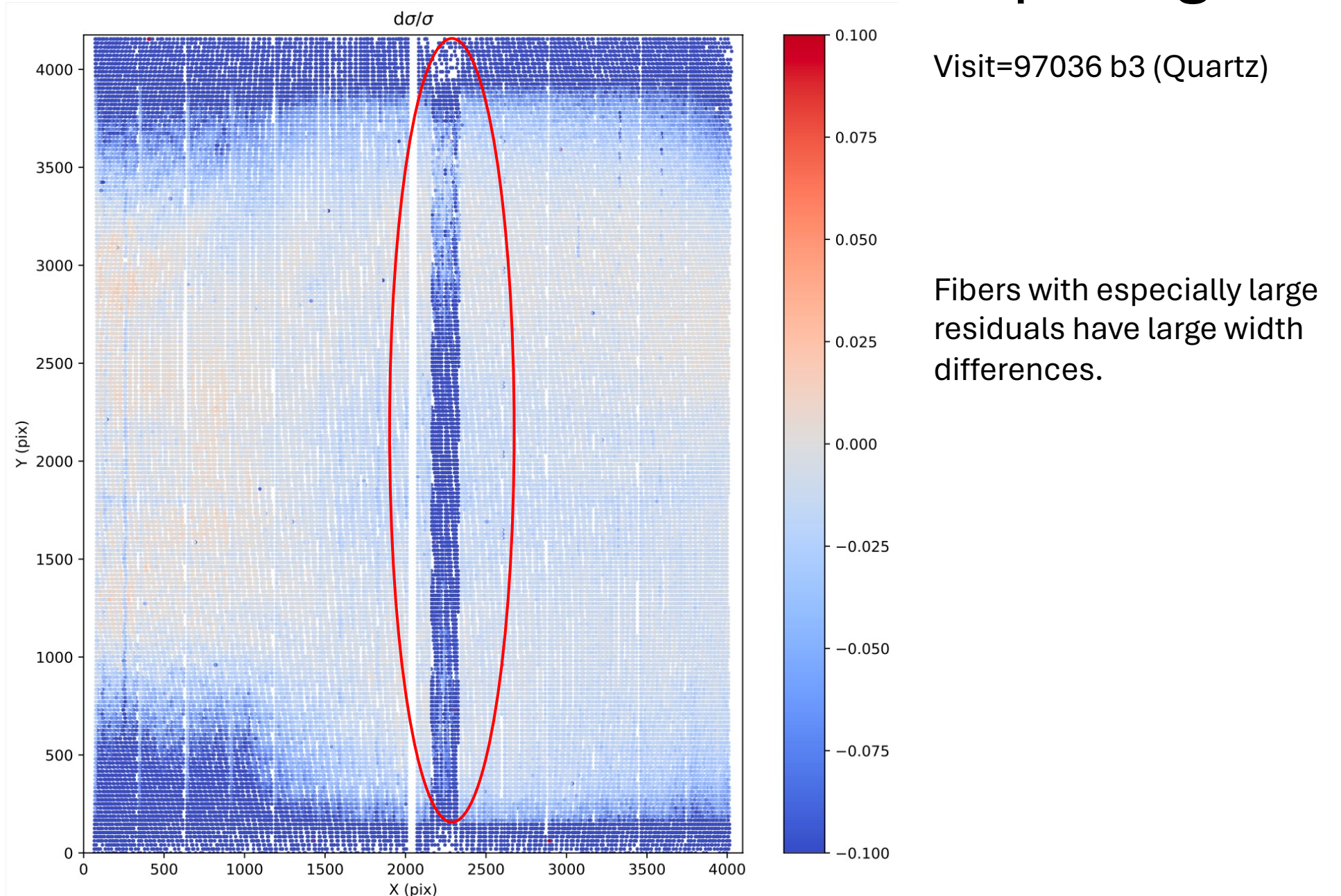
Chi map for Visit=97036 (Quartz)



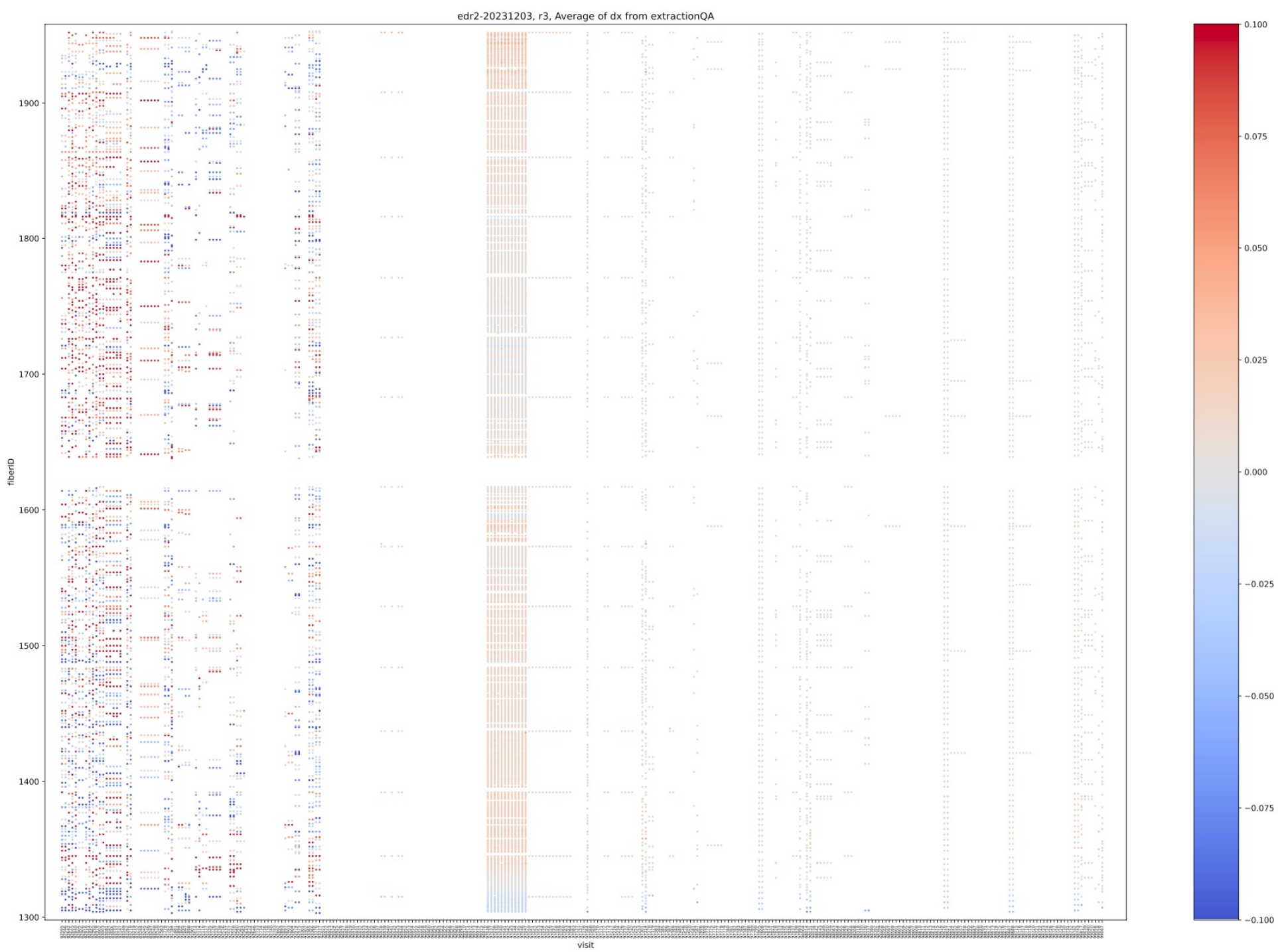
Offset between model and calExp images



Width difference between model and calExp images



dX map (r3)



$d\sigma/\sigma$ map (r3)

